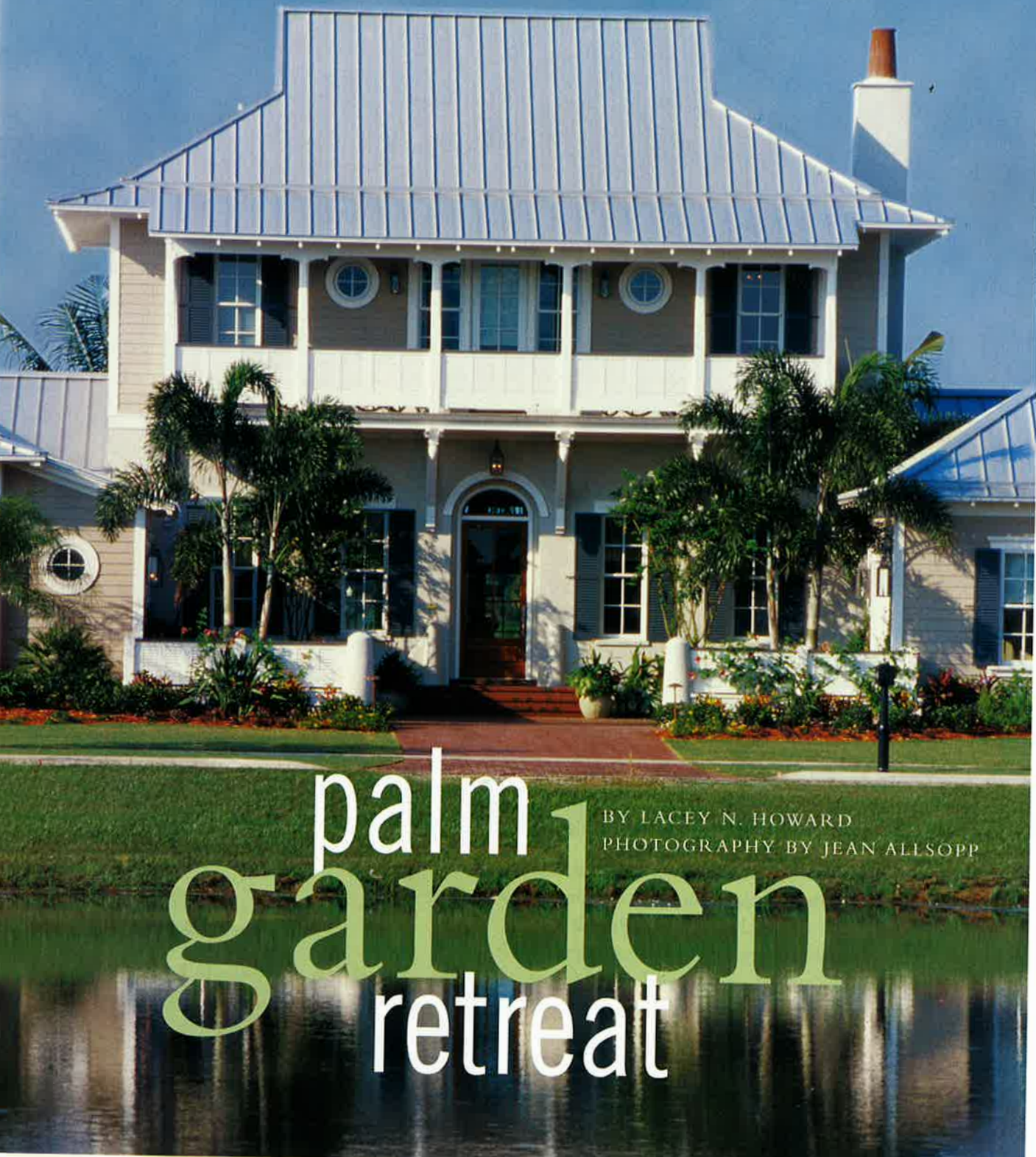


*Welcome to this year's Coastal Living Idea House,
where our design team has created a seaside home with old-time
ambience, modern amenities, and innovative style.*



palm
garden
retreat

BY LACEY N. HOWARD
PHOTOGRAPHY BY JEAN ALLSOPP



The rhythmic slap, slap, slapping of waves against a boat's hull sets the tempo for life in MiraBay. This new South Florida community nestles along the eastern shore of Tampa Bay amid mangrove islands and bird sanctuaries. Its houses and other structures exude the atmosphere of Old Florida

but come equipped with the latest technology. Custom architectural detailing, lush landscaping, and attractive streetscapes and waterscapes add to the development's sense of place.

Our 2004 Idea House embraces these same timeless design ideals. Street-side, palms shade the courtyard.





The courtyard patio (inset) is a front-row seat to lagoon sunrises. Left: Garden walls modeled after the home's second-floor porch railings define the brick driveway. Beyond the fence line, the drive widens to allow turnaround space for automobiles. Three garages offer plenty of room for SUVs and watercraft. • SUV: Yukon Denali by GMC.



Inside, beaded board forms wainscoting in bathrooms and the guest cottage, and hefty oak beams adorn the great-room ceiling. The furnishings and accessories take a fresh look at waterside style. "We really wanted the interiors to combine elegance and comfort. This house is truly a livable haven," says interior

designer Susan Lovelace of Lovelace Interiors in Destin, Florida. To create the look, she teamed with designers Connie Simpson and Debbie Faulkner, also of Lovelace.

Outside, a pool and spa bring water to the back door. At the end of the dock, a boat awaits the morning commute. MiraBay's freshwater lagoon

and saltwater canals offer deepwater access to the bay and the Gulf of Mexico, allowing homeowners to bypass landlocked highways.

A redbrick drive escorts visitors inside the lush courtyard. A double garage on one side and a single garage with an attached patio on the other frame the heavily landscaped

area. Architect Don Cooper of Tampa's Cooper Johnson Smith Architects points out that the courtyard, a detail borrowed from island architecture, is at home in the area's tropical climate. "You walk through a flourishing garden on the way to the front door," he says.

Palms wave in the breeze above bromeliads, lantana, and caladiums. Trailing vines climb the patio's arbor over a bistro table and chairs that "invite you to sit and relax before you even enter the house," says Debbie. Connie agrees: "It is a wonderful place to enjoy cocktails and admire the landscaping."

Turn to page 92.



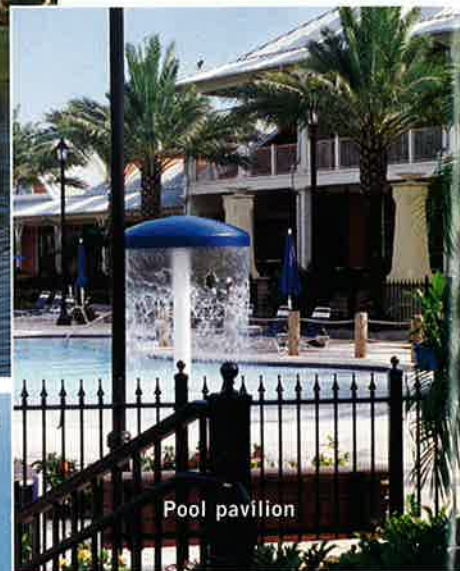
Welcome Center



The MiraBay Club



Pool pavilion



SETTING

In the Southshore area, just across the bay from Tampa, life slows to a more comfortable pace. Here, tucked off U.S. 41, Newland Communities has developed MiraBay, a 750-acre gated community offering waterfront living in a master-planned development. Homes nestle along saltwater canals, freshwater lagoons, and conservation areas.

Each structure, from community buildings to houses, features distinctive exterior details that pay homage to the past. "We've established an architectural tone for the neighborhoods,"

The community's waterfront properties feature docks and give boats access to Tampa Bay and the Gulf of Mexico. Canals lead directly to the bay. In the freshwater lagoon—a rare feature in a coastal development—boats drop into the bay via a lift that can accommodate a 35-foot craft. MiraBay's boat concierge service, Outfitter's, provides kayaks and canoes for exploring, as well as instructional classes, eco-excursions, and fishing advice.

says Don Whyte, Newland's regional president. "We have about 20 elements—borrowed from Mizner, local coastal architecture, and a few other traditions—that we mix and match to create a look that is solely MiraBay." Brenda Kunkel,

Newland's regional vice president of marketing, adds, "And our residents have the peace of mind that they won't see their house repeated just down the street. Our builders have agreed to build one-and-only exteriors here."

MiraBay is a wireless development—at the clubhouse, no phone lines are needed to work online, Don says. A community intranet encourages networking. "If you wanted to start a bridge club, you could set up a notice on the community site," says Don. "It's an instant way of getting word out to all our residents, and we've found it helps people get to know one another at a much faster rate."

With just two-thirds of the community dedicated to residences, a significant amount of acreage is preserved as lakes, parks, and conservation areas. "You experience a true coastal situation," says Don. "We have an abundance of wildlife, including shorebirds and manatees. There is also a tidal marsh, and this property borders the Wolf Branch Creek Preserve."

Besides ecology, MiraBay focuses on recreation and social outlets for its residents. A large clubhouse features meeting rooms and a resort-style swimming pool with a waterslide and shady cabanas. A racquet club and fully equipped fitness center appeal to active members of the community.

“Peek in on something new.”

— David

Try our bold, velvety Red Dirt Ridge Cabernet Sauvignon. The luscious taste of blackberry, chocolate, black cherry and notes of vanilla will delight your palate. It's part of our new Select Vineyard Series, handcrafted wines from specially selected vineyards. They're worth more than just a look.

SELECT VINEYARD SERIES
by WOODBRIDGE

WOODBRIDGE
Select Vineyard Series
BY
ROBERT MONDAVI

RED DIRT RIDGE
CABERNET SAUVIGNON
LODI

2004 IDEA HOUSE

SPECIAL SECTION

FLOOR PLAN

Architects Don Cooper, Mike Willis, and Jennifer Garcia of Cooper Johnson Smith Architects wanted to capture the area's year-round warm-weather climate in the home's design. “We looked at Caribbean architecture and lots of different semitropical architecture for inspiration,” says Don. The three knew they wanted the home to incorporate outdoor rooms and “something of an oasis in the back,” he says.

As in typical tropics design, the house is shaped like the letter H, with a linear center pavilion and perpendicular wings on each end. “The structure is just one room thick in most places, allowing you to capture breezes and have windows on three walls of many rooms,” Don explains. “It also increases the number of spaces that have a view of the water.”

The majority of the living space is at ground level. The great room, dining area, and living area form the center

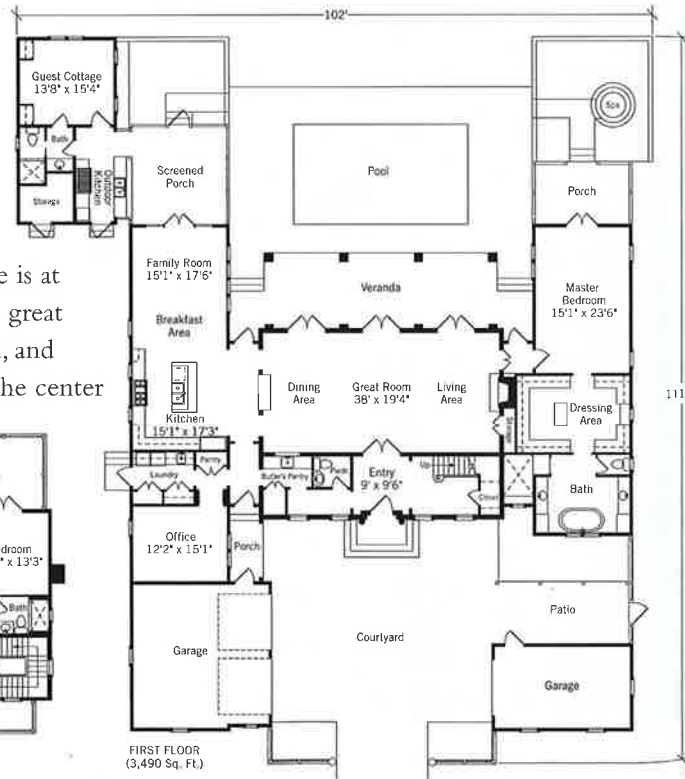
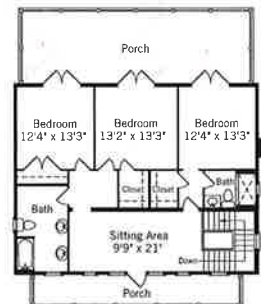
with mirror-image wings—the kitchen, family room, and office make up one; the master suite, the other. “Upstairs, there are three bedrooms, two baths, and big porches, front and back,” Mike says. “This could be kid space, although I would be very happy living in one of those bedrooms,”

adds Don. A guest cottage, attached via a screened porch, adds a fifth bedroom and bath. All five bedrooms have lagoon views.

The spacious house, with more than 1,500 square feet of outdoor living space, doesn't have to be constructed all at once.

“This could be a house built over time—starting with the center, then making additions,” Don says. “We just compressed that history.”

5 bedrooms,
4½ baths
Heated area:
4,696 square feet
Porches & decks:
1,508 square feet
Ceiling heights:
first floor, 12';
second floor, 10'
Width & depth:
102' x 111'4"
Foundation:
crawl-space



House Plan: To order working drawings of Palm Garden Retreat (COL-0411-1113), call 800/755-1122 or visit our Web site, coastalliving.com. Costs: Planning set, \$349; five sets, \$1,020; eight sets, \$1,100; reproducible sets, \$1,260. Postage, handling, and applicable taxes will be added. **Reminder:** Site conditions vary, so we recommend consulting a local architect and/or engineer before starting construction. Plans do not include fully engineered framing plans, heating and plumbing plans, or material quantity lists. All plans are copyrighted. All square footage is approximate.



ENTRY

"Inside the front door, the entry really sets the tone for what the rest of the house will show you," Connie says. "It's a refined, coastal look."

A hand-painted door cabinet displays carvings reminiscent of scallop shells and waves. Above, a custom-made shell mirror continues the theme alongside striking silver lamps topped with black shades. A beaded chandelier hangs from the coffered ceiling, while double-louvered doors, topped with an arch and pickets, open to reveal the great room and views of the pool and lagoon.

Louvered walls and doors lend island authenticity to the dramatic space. "In the islands, real louvers let the air come through, but they offer



privacy and shade," explains Don. "These walls give a sense of that same breeziness." Louvers are used as detailing

throughout the home. "The entry's application sets the tropical mood right from the beginning," Don says.



From the entry, a vestibule leads to the powder room, butler's pantry, and kitchen. The designers chose a bright painting by a Tampa artist to define the space. "The sea-horse painting is a striking contrast to the more serious foyer," Debbie says. "It draws you in to the other living spaces." The shell-encrusted mirror (detail above) adds an elegant coastal accent. A glass-paneled front door provides a stately entrance to the foyer. The stylish handle set promises security and has a finish that will not fade in the harsh coastal environment.

• Door hardware: Kwikset.



Two dramatic shell lamps bathe the living area in intimate light. “The lamps look like wonderful pieces of sculpture,” says Debbie. Handblown vases and bowls also accessorize the space, repeating the throw pillows’ splashes of lime and orange. “The glass pieces add crisp color to the room,” notes Connie. An island landscape on stage above the fireplace mimics the room’s soft green and blue tones. The console table behind the sofa boasts cast-stone pedestals, a black fossil-stone top, an iron stretcher, and cast accents. “It’s a beautiful way to divide the living and dining spaces,” Susan says. Adds Debbie, “We centered the grouping on axis with the front door, and it creates a line out to the water.”

GREAT ROOM

“This room is the center of the house,” Don says. “Anyone coming through the front door would naturally walk into it.” The architects wanted the area to have a formal feel, but also understood that it would see daily use.

Three sets of French doors line one wall, open to the pool area, and shed light on the great room’s striking details. A fireplace and mantel framed in crisp white anchor the living area. Above, the ceiling is tongue-and-groove cedar, stained dark to echo the floor color and accented by large, rustic beams. “Those

beams are at least 100 years old and hand-hewn,” says builder Mike Morris of the oak pieces salvaged from a barn in North Carolina. “The look of this ceiling is reminiscent of homes built in this area a long time ago, but here, it is purely decorative,” Mike says. Architect Jennifer Garcia explains, “We needed something to break up the room visually, and the beams really add character to the house.”

The designers took cues from the ceiling for outfitting the large space. The living area centers on the fireplace, surrounded by traditional



Louvered doors open wide to the living and dining areas. The designers chose a fanciful fabric in blue and green hues for the oval-back dining chairs. Tabletop accessories—bamboo-style chargers; soft-blue dinner plates; and ribbed, ivory sajad plates—coordinate beautifully. Crackle-glass stemware and shell napkin rings add texture to the setting. The dining room’s bar cabinet has ample storage and a mirrored back panel. “It holds lots of barware,” says Connie. “Just open it up during a party and guests can fix themselves a drink.” • Furniture: Thomasville. • Lightbulbs: Philips. • Tableware: Pier 1 Imports. • Interior doors: JELD-WEN.

furniture with modern upholstery. Building from the walls’ neutral, gray-green palette, the designers chose fabrics to echo the nearby water. “We started with the hazy aqua, then we found the wonderful contemporary fabric on the wing chairs [above, bottom right corner] to add some rhythm,” says Susan. The trio dressed a three-cushioned sofa in the aqua upholstery and a romantic chaise in a muted tone of the same hue. Throw pillows add color.

The dining area replicates the style, with a twist. A pair of round pedestal dining

tables with a handsome ebony finish offers seating for eight. “Everything in the great room is very linear, including the room itself. The round tables really help make it less traditional,” Debbie says. Susan adds, “With a group of people at a rectangular table, there are several friends you never get a chance to talk to. The round tables make conversation easier.” A chandelier with green glass accents provides adjustable lighting. “The large chandelier unifies the dining room visually, so the two tables are seen as one unit,” Connie says.



KITCHEN & FAMILY ROOM

Roomy louvered cabinets painted a creamy white frame the laid-back kitchen. Granite countertops and a tumbled-marble tile backsplash are peppered with black. "The mix—light-colored louvers, ebony island, wood and granite countertops, stainless



Plantation-style louvered doors dress custom cabinets in tropical style. The island coordinates, sporting the same oversize stainless pulls. "The hardware is stylish and contemporary, and reminds me of something you would find on a yacht," Debbie says. Above the louvered doors, glass-front spaces offer a place to display collectibles. An under-mount, full-size stainless sink with side compartment and disposal is center stage. Its removable grid shelf lets just-washed vegetables drip-dry. A side-lever faucet with pullout sprayer safely regulates water temperature and pressure. "The view when standing at the sink and looking out to the water is so beautiful. To be able to stand there, do dishes, and see that—what a treat," Susan says. • Cabinets: Plain & Fancy Custom Cabinetry. • Appliances: JennAir. • Sink and faucet: Franke. • Cookware: Anolon.



“People like to hang out in the kitchen, so we [added the family room and] made it big enough to have plenty of seating,” Don says. The two rooms share a hipped roof, with an exposed beaded board ceiling and rafters. “This type of treatment creates a relaxed setting and continues the louvered cabinets’ tropical feel,” Don says. “The kitchen is casual, and the table and sitting area are an extension of the space,” adds Susan. The designers created an informal dining area for family meals

appliances—really makes the kitchen a fun, relaxed space,” Debbie says. The island, with a distressed black finish and mahogany top, offers bar-height seating in comfortable, leather-upholstered stools.

State-of-the-art appliances in a stainless steel finish give chefs the best of tools. A 48-inch gas range with convection, six burners, and a griddle provides a convenient work space. Twin 20-cubic-foot refrigerators with bottom freezers store make-ahead dishes. When guests arrive, a 30-inch warming drawer holds platters or up to four dinner plates at a time. Hard-anodized, nonstick cookware makes preparation a pleasure, and a three-rack dishwasher with electronic touch controls keeps cleanup effortless. After the work is done, the inviting space ensures the hosts can relax with guests.



Four pie-shaped ottomans come together to create a round cocktail table. “The ottomans have a million uses,” Connie says. “You can use them as extra seating, as four small tables, as one large table, and everyone loves them.” A windswept palm painting offers another window to the lush landscape. • Wine: Woodbridge Winery.

with a rectangular table for four. Nearby, a chocolate-brown tufted-back sofa sits opposite an entertainment center and a pair of island-style chairs with rolling arms. “This is a comfortable space for families to enjoy time together, watching TV, doing homework, and cooking dinner,” Debbie says. “The dark sofa fabric is very practical. You don’t have to worry about kids dripping spaghetti sauce or adults spilling wine.”

GMC

WE ARE PROFESSIONAL GRADE.™

GMC IS THE PROUD VEHICLE
SPONSOR OF THE NATION'S FINEST
COLLECTION OF IDEA HOUSES.



COASTAL LIVING IDEA HOUSE

COASTAL
LIVING.

MIRABAY • TAMPA, FL
OCTOBER 2004 – SPRING 2005



PROGRESSIVE FARMER IDEA HOUSE
& FARMSTEAD

Progressive Farmer

OAKLAND FARMS • NASHVILLE, TN
JUNE 10 – SEPTEMBER 5



SOUTHERN ACCENTS SHOWHOUSE

Southern Accents.

CLUB PLACE • MOUNTAIN BROOK, AL
OCTOBER 2004 – DECEMBER 2004



SOUTHERN LIVING IDEA HOUSE

Southern Living

IRON HORSE CANYON • SAN ANTONIO, TX
JUNE 12 – SEPTEMBER 26



SUNSET IDEA HOUSE

Sunset

VERRADO, AZ
SEPTEMBER 10 – NOVEMBER 14

At each of these 2004 Idea Houses, you'll find GMC vehicles on display along with a variety of innovative design ideas and products for your home.

Visit www.coastalliving.com/gmc for a virtual tour of the 2004 Coastal Living Idea House at MiraBay in Tampa, Florida.

SPECIAL SECTION

2004 IDEA HOUSE



Elegant detailing in the butler's pantry (left) include its tile backsplash and intricate ceiling (inset). Bottom: The kitchen pantry's adjustable shelving and drawer-style baskets mean plenty of room for snacks. Houseguests will never fall short on choices when this pantry is fully stocked.

• Embossed ceiling:
M-Boss, Inc.

PANTRIES

Susan, Connie, and Debbie wanted to give the butler's pantry a reflective quality with different metals and stainless finishes. "We started with the embossed-tin ceiling tiles and chose a complementary backsplash and cabinet hardware, and we chose stainless for the appliances," Debbie says of a 50-bottle wine chiller and an ice maker, both installed under the counter. The designers outfitted the room with cabinets that have the same distressed black finish as the kitchen island. A deep, under-mount sink features a gooseneck faucet with a satin-nickel finish. Above the counter, folding doors open onto the dining room, making the butler's pantry ideal for bartending.

Just off the kitchen, another pantry features ample room for foodstuffs, dry goods, and pet treats. Drawers offer storage for linens and place mats alongside ribbon and paper for wrapping gifts.





MASTER SUITE

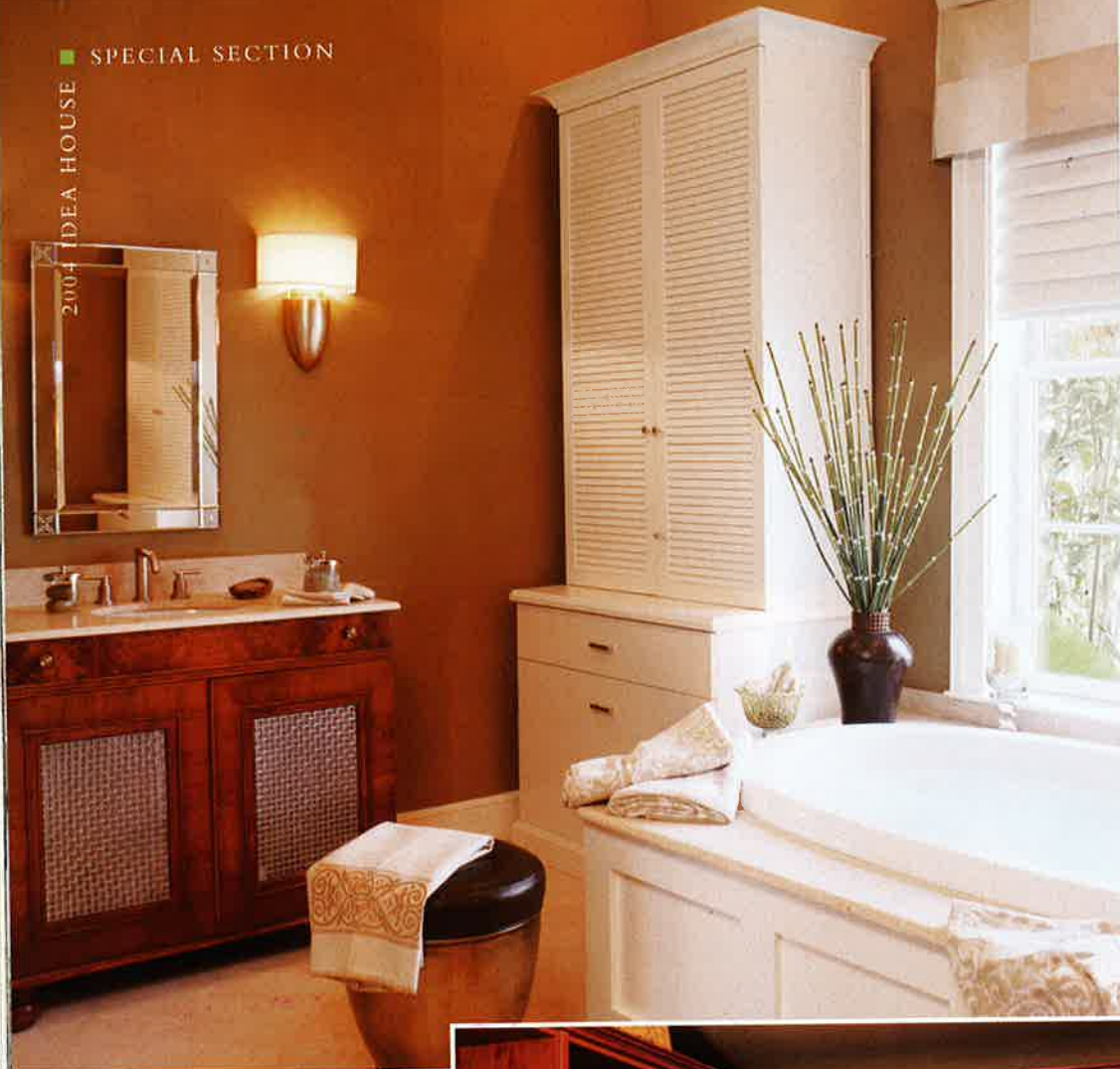
“When you walk into the master bedroom, you just go, ‘Ahhhhh,’” says Connie. To keep the space restful, the designers selected a neutral palette. Bedding and furniture in pale colors, from soft butter to linen white, accent walls painted a serene, deep sage.

The king-size bed’s panel head- and footboards are a contemporary spin on Shaker styling. Luxurious linens and a quilted sateen coverlet and shams dress the bed in seaside-resort style. Two leather night tables hold bedtime needs.



Framed by a pair of leather chairs, French doors open to a private porch with a view of the lagoon. Outside, blue-fringed pillows and bolsters accent polka-dot cushions—all in weather-safe outdoor fabric. Curtains in putty- and caramel-colored outdoor fabric hang from shower rods mounted on the porch’s arbor. The drapes close for privacy, but the ceiling remains open for views of full moons and starry skies.





Antique-style vanities add the warmth of furniture to the stone-tiled bath. "The vanities have a sophisticated English flair. We hung burnished silver sconces and Venetian mirrors above them for a real blend of styles," Debbie says. Windows over the deep bathtub look out on the courtyard patio. Blinds lower for privacy. • Blinds: Hunter Douglas. • Vanity: J. Tribble Antiques. • Bathtub: American Whirlpool.

offer natural light and a view of lush landscaping. Folded fabric blinds lower easily. Walnut vanities with wire-screen detailing and limestone countertops give master suite occupants their own sink space. Twin built-in chests keep sand-hued towels and cloths at the ready. "This bath is really a warm and intimate space," Debbie says. Adds Connie, "With all the amenities of a luxury hotel."

Turn to page 114.

Yellow leather armchairs and ottomans and a leather bench lend comfortable seating. "We kept the master bedroom really simple," Debbie says. "The rug brings in color and frames the area at the end of the bed, but all the other fabrics are neutral." Window dressings are sheer panels, sewn from two fabrics cut into blocks and layered. For privacy, shades feature overlapping fabric. "The soft folds form a textured stripe, giving the space privacy and light control," she adds.

In the master bath, a deep, heated, jetted tub with lumbar support and a rolled backrest beckons. A classically styled faucet yields a column of hot water to fill the tub. Windows



The spacious closet with adjustable shelving satisfies any need for dressers or chests in the bedroom. "Roomy compartments and drawers make it very functional," Debbie says. Components include special storage for shoes, ties, belts, scarves, and jewelry. Resort wear and accessories are neatly at home hanging from rods, folded on shelves, and tucked in drawers. • Closet: California Closets. • Clothing and accessories: Coldwater Creek.



Managing tasks at the coast is easy in the home office. A lightning-fast Internet connection allows for online bill paying and minimizes time spent managing investment portfolios. • Internet Service Provider: AOL. • Finance: SunTrust Bank.

OFFICE

Tucked off the kitchen, a masculine study overlooks the courtyard. The designers, inspired by local cigar shops and old cigar boxes, painted walls a deep tan and moldings dark brown. "This is not a huge room," Connie says, "so we hung four mirrors on the wall to make it appear larger." Much of the room's furniture, including a card table, home office center, and lounge chairs, holds to the dark palette. The desk, however, strays. "Instead of a traditional wood desk, we

chose a glass-topped dining table to add some light to the room," notes Connie. The 38- by 80-inch tabletop allows space for two host chairs to pull up to the desk side by side or opposite each other. The desk's glass top rests on sawhorse-style bases finished in rich ebony. The black accent color continues in the leather desk accessories and the black-and-white photographs hung nearby. A small reproduction palm tucks into the room's corner, adding a low-maintenance hint of nature.



Artwork in upstairs rooms features seascapes and shorebirds, tying these lofty spaces together. Bottom: Sage green and sunny yellow paint wrap the hall bath in 18-inch-wide horizontal stripes. The polka-dot shower curtain hangs on an arched rod. "The rod adds a nice, soft curve to the space," Debbie says. Connie adds, "Not only does your curtain look more full, but you have a lot more space in the tub." Pedestal sinks with wide-set lavatory fixtures in satin nickel, mirrors in bamboo-style frames, and contemporary lighting complete the space. A reproduction linen press stores towels and bath products. * Artwork: Jim Draper.



UPSTAIRS

Dedicated to the young and the young at heart, the second floor features three bedrooms and a play area. "The kids can make it their own space," Connie says, "and it's a place to play games, do homework, and hang out while the adults are entertaining downstairs." The designers chose upholstery for chairs and ottomans in colors "out of a crayon box," Connie says. An oak armoire stores video games and board games alongside playing cards and action figures. A flip-top console table offers space for arts and crafts, but can open to dining-table size when



needed. A French door and windows lead to a porch, perched above the courtyard, where rocking chairs wait. Porthole windows give the space a nautical feel.

A queen-size bed topped in honey-colored quilted linens and crowned by an upholstered headboard waits in a suite bedroom. "There's nothing more inviting or

comfortable than a headboard covered in soft fabric," Susan says. A white bedside chest and dresser stand out against coral walls. "We didn't use traditional paint colors," Connie says. "We chose an orange for the walls and melon for the ceiling, and trimmed it in yellow."

Kiwi green with white molding sets a cottagey tone for the middle bedroom. A dark-stained apothecary chest acts as a bedside table for white iron twin beds. Above, hot-pink flamingos strut through ankle-deep water on oil-painted canvases. "We



On the upstairs porch, architect Don Cooper used louvered railings. "All three bedrooms face the water, and we wanted the louvers to give them some privacy from passing boats," he says. The handrails and decking are made of a composite material that can hold up to the elements. "It's impervious to just about anything—water, insects, humidity," builder Mike Morris says. "You can use it where regular wood wouldn't last. Anything like this that's long-term maintenance-free is great for homeowners." For a nautical exterior accessory, designers chose lanterns with an aged copper finish. Above: In the upstairs bedrooms, French doors made of tinted, insulated glass keep indoor fabrics safe from UV rays.

- Decking: Trex.
- Hammock: The Hammock Source.
- Windows and French doors: Pella Windows & Doors.
- Exterior lighting: Charleston Gas Light.

wanted this space to be soft and girly with fresh, crisp colors," Debbie says. Oversize square bolsters covered in a playful botanical upholstery act as footboards for the beds. "I just picture kids lounging on these," Debbie says. "It really gives them comfortable, easy-to-move seating that's just their size."

"The third bedroom is a little more traditional," Susan says. "It has a soft, French feel." Matelassé linens on a queen-size iron bed create the quiet, romantic look. A black credenza, hand-painted with botanical accents and topped with a matching mirror, brings storage space to the cozy room. "We used a credenza in place of a regular dresser because it is

not as deep and doesn't take up as much space," Connie says.

All three bedrooms open to a porch that has a bird's-eye view of the pool and lagoon. Oatmeal-colored spawave outdoor fabric and a bevy of outdoor throw pillows cover wicker chairs and chaise longues. Hammocks, constructed of a fiber that promises the feel of cotton while maintaining durability and colorfastness, encourage an afternoon nap. Lantern-style lights offer the look of gas flames but stay lit against sea breezes and ceiling fans.



Extravagant 310-thread-count sateen bedding in shirt-striped beige dresses the bed (below) in style. Bamboo cutouts fit in the framework of ceiling beams and inspires tropical dreams. A quietly efficient ceiling fan keeps breezes blowing on stuffy Florida nights. • Furniture: McGuire. • Linens: Yves Delorme. • Ceiling fan: Hunter. • Fixtures: Grohe

GUEST COTTAGE

Separated from the main house by the screened porch, this suite provides privacy. Guests have access to the outdoor kitchen near their bedroom door—ideal when hunting for a midnight snack. “It’s basically your own little living space,” Debbie says.

“This small room has lots of character,” Don adds. The space features a bamboo ceiling, tall white wainscoting, built-in closets with louvered doors, and ocean-blue walls.



The design team chose West Indies-style furniture in a tobacco-colored finish. Built-ins flank a queen-size bed with square mesh caning. Angled between woven-shaded windows that overlook the lagoon and pool, a matching chaise longue offers a place to relax. “It’s



the perfect spot for someone to be alone with the view of water,” Connie says.

The adjoining bath echoes the island theme. Louvered wainscoting and brick-shaped “subway” tiles add texture to the walls, while a yew-wood

sink base with ebony inlays carries the bedding’s pin-stripe into the bath. A vessel sink perches on top, and modern fixtures in a satin-nickel finish give the space a contemporary edge.



OUTDOOR KITCHEN

A screened porch yields alfresco living, dining, and cooking spaces and overlooks the pool and lagoon. A rattan sofa and armchair feature cushions and throw pillows in coordinating

outdoor fabrics. Spunky square ottomans surround the tile-topped cocktail table. "We mixed all different types of furniture—rattan, woven, iron," Connie says. Susan adds, "We're really approaching outdoor spaces the same way we approach interiors



because people love outdoor living so much. On the screened porch we added lamps and artwork to make this space as enjoyable as the indoor spaces."

On the screened porch, lamps designed for the outdoors feature weather-resistant shades. The glass-topped table and four chairs are ideal for a casual meal or game of cards. "This is a relaxed place to barbecue and grill," Susan says. "The kitchen has everything you could want." • Outdoor furniture and kitchen: Laneventure.

Behind the bar, a five-burner grill anchors the kitchen. Outfitted with an under-counter refrigerator and a stainless steel sink with a gooseneck faucet, the space is ready for an afternoon cookout. Slate countertops work with stainless appliances and cabinet hardware to give the space upscale flair.



Outdoor fabrics in a variety of colors and patterns last through years of exposure to the area's harsh sun and afternoon rain showers. The designers arranged the seating in a surprising way. "Everything in the house is focused outward, toward the water," Susan explains. "We turned the chaise longues to face the house, and they enjoy a wonderful view of the architecture." Below: The home's exterior wears a muted palette. Rich shades of khaki on siding and masonry work with white trim and dark-gray shutters. • Outdoor fabrics: Sunbrella.



OUTDOOR LIVING

"You should feel like you're on vacation when you come home from work," says Don Cooper. A pool, spa, tropical landscaping, and comfortable

furniture turn the lagoon-side lawn into a resortlike backyard oasis. Large, cast-stone tiles create a wide pool deck. Luxurious faux-bamboo double chaise longues in a faux-tortoise finish join

bar-height bistro sets "for eating, drinking, and being merry," Debbie says. On a wide veranda just outside the great room, oversized black rattan ottomans and chairs topped with oyster-colored cushions create a shady space for reading and napping. "We kept the veranda uncluttered and symmetrical," Susan says, "so that it welcomes you

outside, but nothing inhibits the view from indoors."

Just steps from the pool, a bubbling spa entices the weary. Here, low-slung palm trees and sea grapes provide privacy from neighbors. The nearby master porch, draped with lengths of outdoor fabric, offers a place to relax after a dip in the warm spa. A grouping of faux-bamboo



chairs and an ottoman invite more relaxation. "We wanted the master porch to be a sort of private patio for the couple to enjoy coffee or cocktails together," Susan says.

A dock stretches over the deepwater lagoon. At its end, kids and adults can climb into a boat and head out to sea for an afternoon of birding, fishing, cruising, or picnicking on the bay.

LANDSCAPE

"The location of the house allowed us to incorporate some plants we couldn't use further inland," says Sean Murphy. Sean and Jaime Ebberts, both of Atlanta's Amenity Architects, designed the home's landscape plan. "We were able to include several species of palms in order to complement the



Sean Murphy and Jaime Ebberts take all five senses into account when formulating a landscape plan. "We used tea olives by the doors," Sean says. "They are very fragrant, so when you walk in and out, you enjoy the smell." The two also placed a travelers palm just outside the kitchen windows. The palm fronds cast wonderful shadows inside, and will screen future neighborhood growth.



architects' tropical detailing," he says. Triple- and single-trunk coconut palms, foxtail palms, travelers palms, and a teddy bear palm—which sports a furry brown trunk—serve that purpose.

Street-side, Sean and Jaime framed the square, redbrick courtyard with beds and softened the silhouette of the garden fence. "We wanted the landscaping in front to be very lush," says Sean. Crape myrtles frame the front door, while bromeliads and caladiums thrive in the shade below. "There are

Elegant Traditional Copper and Brass Lanterns to Adorn Your Home

The Plantation Collection

from
Charleston
Gas Light



- Elegant lantern designs add beauty and value to your home
- High-quality rust-resistant copper and brass
- Choose electric or gas
- Select from The Plantation Collection or customize a design for a true one-of-a-kind lantern
- Residential or commercial
- Call for a free catalogue

Charleston
GAS LIGHT
IT'S A GAS... AND ELECTRIC TOO!

1 Ocean Point
P.O. Box 989
Isle of Palms, SC 29451

1-877-GASLITE
4 2 7 - 5 4 8 3

www.charlestongaslight.com

MADE IN THE USA

Out-of-state orders are welcome

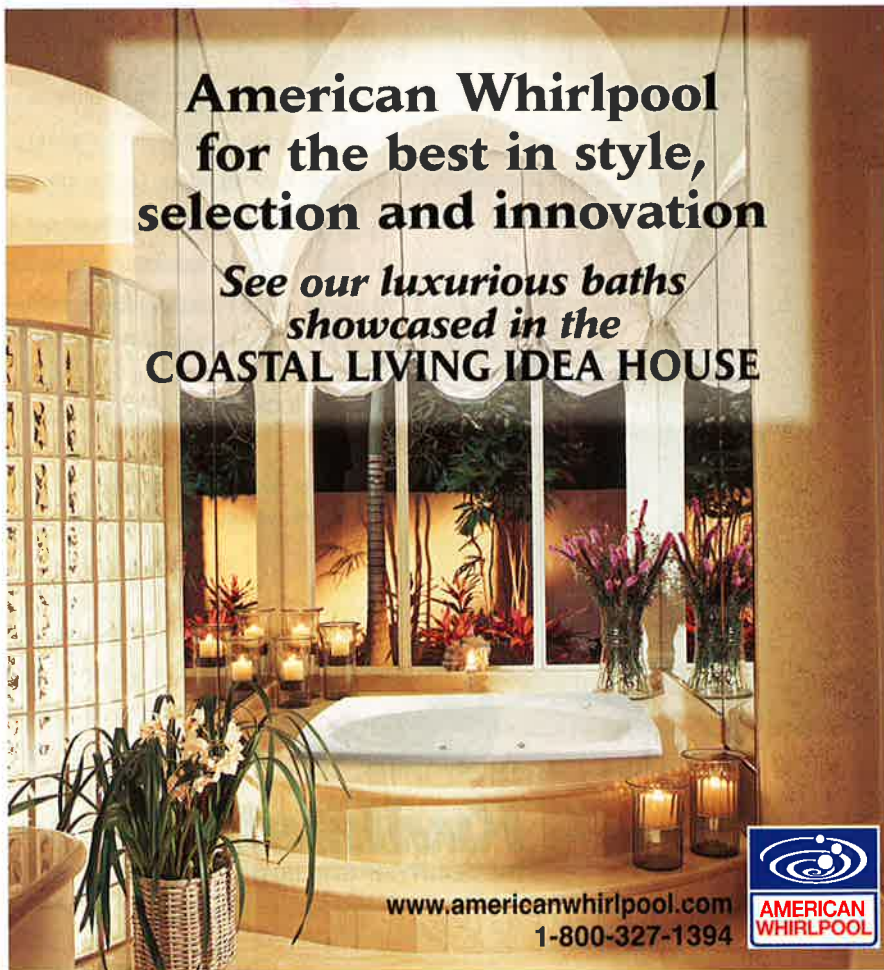
SPECIAL SECTION

2004 IDEA HOUSE



American Whirlpool for the best in style, selection and innovation

See our luxurious baths
showcased in the
COASTAL LIVING IDEA HOUSE



www.americanwhirlpool.com
1-800-327-1394



also quite a few varieties of heliconia, a tropical plant, in the beds,” Sean says. Along the fence and arbor, the pair trained vines on copper wire, wrapping and twisting them to create shapes. “We selected varieties such as Confederate jasmine that climb by twining, so that the vines don’t adhere to the structures,” Sean explains.

“Behind the house, we wanted people to focus on the pool and the view,” says Jaime. “We didn’t want to overpower the space.” Around the pool, ample containers hold tropical plantings that bring texture, color, and a mix of large leaves to the expansive tile surround. Tall palms frame the view of the lagoon, and bromeliads of several colors circle the trunks.

Two terraces—off the master porch and the outdoor kitchen—also garnered their attention. “We

"I wanted to use every color and texture we could," says Jaime. "The differences make each specimen stand out, but they all complement each other." In the succulent garden, bluish-gray tones contrast with green grass and palms. In containers, colorful bromeliads mingle with flowing sweet-potato vines and spiky asparagus ferns.



knew those would be focal points," Sean says. He and Jaime crafted radically different gardens in the twin spaces.

Around the spa, a lush garden gives privacy from neighbors and passing boats. "By mixing all kinds of foliage with interesting, large leaves, we created a strong screen," Jaime says.

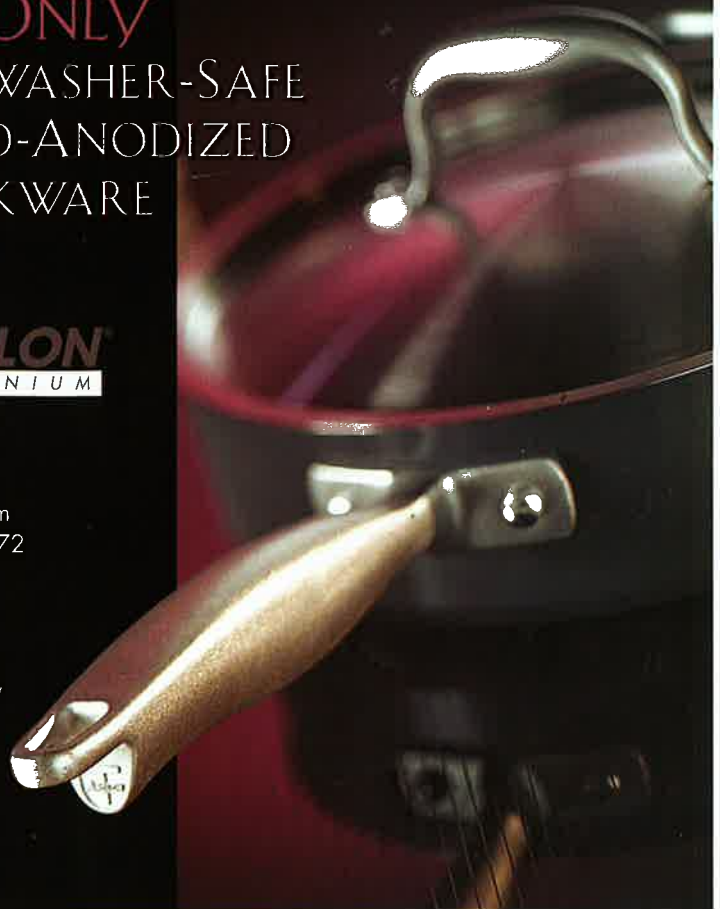
On the opposite side, Sean and Jaime built a succulent garden centered on a bonsai-style plumeria tree. "We added a few limestone boulders to the space, and behind it planted a huge cardboard palm."

THE ONLY DISHWASHER-SAFE HARD-ANODIZED COOKWARE

ANOLON
TITANIUM

www.anolon.com
1 (800) 388-3872

Available
at Macy's,
Burdines-Macy's,
Bon-Macy's,
Rich's-Macy's
and other fine
retailers.



CUSTOM SINK BASES



J. TRIBBLE

Antiques

764 Miami Circle NE ☎ Suite 122 ☎ Atlanta, Georgia 30324
PH 404.846.1156 ☎ TOLL FREE 888.652.6116
jtribbleantiques@mindspring.com ☎ www.jtribbleantiques.com

2004 IDEA HOUSE



DESIGN TEAM

MiraBay Development Team

Left to right: Don Whyte, Brenda Kunkel, Chris Coughlin, Paula Elliott, Joyce Trigg

Bayfair Builder Team

Back, left to right: Mike Morris, Jim Lloyd, Stephen Marty; middle, left to right: Terina Narkievich, Alan Hoeksema, Jennifer Garcia, George Theriault; seated: David Seidenberg, Ann Kohan



Cooper Johnson Smith

Architects Left to right: Mike Willis, Don Cooper, Jennifer Garcia



Amenity Architects

Landscape Design Sean Murphy (left), Jaime Ebberts

Lovelace Interiors Design

Team Left to right: Susan Lovelace, Debbie Faulkner, Connie Simpson



SPECIAL THANKS

Coastal Living would like to extend our appreciation to Boral Brick, D&S Designs, Douglas Taylor, ICI Paints, Laurie Bell, Lisa Landsman, Maytag, NDI, Outdoorables, Ramos Marble & Granite, Shaw, Village Court, Wildwood Lamps & Accessories, and Wolf Designs. Your products and talents add a distinctive touch to this project.



No power. No worries. Standby power puts you in control.

Nothing protects your home and family from a power outage better than a Home Standby Generator by Briggs & Stratton Power Products. When an outage occurs, the standby system starts automatically and switches from utility power to generator power. When utility power is restored, the system senses it, transfers service back to the utility, and shuts down the generator.

- Fully automatic operation
- Powered by natural gas or liquid propane
- All-weather protection and durability
- Built-in diagnostic center that relays performance messages
- Powered by a Briggs & Stratton Vanguard Premium/Commercial engine

A single source for purchasing, installation and maintenance

Call 1-800-732-2989 ext. 35 or visit www.homegeneratorsystems.com.



DEBORAH WHITLAW LLEWELYN

COLLEEN DUFFLEY



Engineered interior products promise ease of maintenance for homeowners on the coast. Prefinished hardwood floors grace most every room. "The dark, wide-plank floors give the house a lot of character and make it feel like an older home," says Ann Kohan of Bayfair. Beaded board made from a cellular PVC material graces ceiling treatments in the master suite, kitchen, family room, and porches, along with wainscoting in bathrooms and the guest cottage. The material is highly resistant to moisture and insects, can be painted, and will not rot, cup, split, or delaminate. "This product was easy to install and will work extremely well in our climate," Ann says. The South Florida weather presents challenges that include hurricane threats, heat, humidity, cool nights, afternoon thunderstorms, power sustainability, and interior climate control. An innovative heating, cooling, and indoor air-quality system ensures year-round comfort with humidity management. A handy generator provides worry-free protection for a family and their possessions by automatically maintaining wattage when the power goes out. • Heating and cooling: Lennox. • Generator: Briggs & Stratton. • Siding: James Hardie. • Beaded board: AZEK Trimboards. • Roof: Metal Roofing Alliance.

BUILDER NOTES

For Mike Morris and his team at Bayfair, the battle between building products and the harsh coastal environment is a constant one. "In this climate, I don't know what we'd do without composite products," says Mike. "We do appreciate the look of natural products, but with the moisture, salt air, and sun, they can be impractical."

Exposed to the elements, a home's exterior can take a beating within a year. A composite-siding product, offered in a number of styles, maintains its fresh look. "It cuts and nails just like wood, and you can paint it," says Jennifer Garcia. Mike adds, "You treat it exactly like wood, it's just more durable and longer-lasting." Upstairs, exterior handrails and floors and the outdoor kitchen floor

boast a composite-wood product that will not rot, crack, or split. "You can use it in an application where regular wood wouldn't apply," Mike says.

A metal roof, common to coastal architecture, features a contemporary Dutch-seam design. Aluminum-clad windows and doors require little maintenance, are energy efficient, and can be painted or stained.

RESOURCES

NATIONAL SPONSORS: High-speed Internet by AOL for Broadband; 800/827-6364 or aol.com. Bathtubs by American Whirlpool; 800/327-1394 or americanwhirlpool.com. Cookware by Anolon; 800/326-9333 or anolon.com. Beaded board by AZEK Trimboards; 866/549-6900 or azek.com. Generator by Briggs & Stratton; 800/743-4115 or briggspowerproducts.com. Closets by California Closets; 415/256-8500 or calclosets.com. Outdoor fixed lighting by Charleston Gas Light; 877/427-5483 or charlestongaslight.com. Clothing by Coldwater Creek; 800/262-0040 or coldwatercreek.com. Artwork by Jim Draper; 904/598-9998 or healingpalms.net. Kitchen fixtures and sinks by Franke; 800/626-5771 or frankeksd.com. Yukon Denali SUV by GMC; 800/462-8782 or gmc.com. Bath fixtures by Grohe; 630/872-5700 or grohecatalog.com. Hammocks by The Hammock Source; 800/334-1078 or thehammocksource.com. Siding and trimboard by James Hardie; 888/542-7343 or www.hardie.com. Window treatments by Hunter Douglas; 813/254-4066 or hunterdouglas.com. Fans by Hunter Fan Company; 888/830-1326 or hunterfan.com. Interior doors by JELD-WEN; 541/850-2606 or jeldwen.com. Appliances by JennAir; 800/688-1100 or jennair.com. Door hardware by Kwikset; 800/327-5625 or www.kwikset.com. Outdoor furniture by Laneventure; 800/235-3558 or laneventure.com. Heating and cooling by Lennox; 800/953-6669 or lennox.com. Tin ceiling tiles by M-Boss, Inc.; 866/886-2677 or mbossinc.com. Study and guest cottage furniture by McGuire; 800/662-4847 or kohlerinteriors.com. Roof by

ATAS International, Inc.; 800/468-1441 or atas.com, a member of the Metal Roofing Alliance; 360/275-6164 or metalroofing.com. Windows and exterior doors by Pella Windows & Doors; 800/374-4758 or pella.com. Lightbulbs by Philips; 800/555-0050 or lighting.philips.com/nam. Accessories by Pier 1 Imports; 800/245-4595 or pier1.com. Kitchen cabinets by Plain & Fancy Custom Cabinetry; 800/447-9006 or plainfancycabinetry.com. Outdoor fabrics by Sunbrella; sunbrella.com. Finance by SunTrust Banks, Inc.; 800/786-8787 or suntrust.com. Furniture by Thomasville; 800/225-0265 or thomasville.com. Decking by Trex Company; 800/289-8739 or trex.com. Vanities and antique-style pieces by J. Tribble Antiques; 888/652-6116 or jtribbleantiques.com. Wine by Woodbridge Winery; 888/766-6328 (x2839) or www.woodbridgewines.com. Linens by Yves Delorme; 800/322-3911 or www.yvesdelorme.com.

SPECIAL THANKS: Bricks by Boral Bricks; 800/526-7255 or borallbricks.com. Shell mirror by D&S Designs; 707/781-5339 or apago.com/dsdesigns. Blown glass by Douglas Taylor; 813/731-2633. Outdoor lamps from the Outdoorables collection by Frederick Cooper; 773/384-0800. Paint by ICI Paints; 800/984-5444 or icipaints.com. Outdoor pillows by Laurie Bell; 336/670-9503 or lauriebell.com. Artwork by Lisa Landsman; 813/362-0344 or lisalandsman.com. Washer and dryer by Maytag; 800/688-9900 or maytag.com. Botanical reproductions by Natural Decorations, Inc. (NDI); 800/522-2627 or ndi.com. Kitchen and butler's pantry countertops by Ramos Marble & Granite; 888/876-4462 or rmg-inc.com. Flooring by Shaw; 800/441-7429 or shawfloors.com. Artist's prints from Village Court; 910/693-0327 or villagecourt.net.

Lamps by Wildwood Lamps & Accessories; 252/446-3266 or wildwoodlamps.com. Office desk accessories by Wolf Designs; 866/289-9653.

OTHER PRODUCTS: Rolled bamboo ceiling in guest cottage by Bauer International; 800/582-7690 or bauerinternational.com. Kitchen backsplash inserts by Crossville; 931/484-2110 or www.crossville-ceramics.com. Kitchen backsplash by Dal-Tile; 214/398-1411 or daltile.com. Living room sconces by Flambeau Lighting; 800/407-9008 or flambeaulighting.com. Master bedroom draperies by Pollack; 212/627-7766 or pollackassociates.com. Upstairs bath shower curtain by Richard Bernard; 800/366-9800, to the trade. Family room draperies by Robert Allen; 800/333-3777 or www.robertallendesign.com. Kitchen island top by Spekva; 714/957-0500 or spekva.dk. Master bath mirrors by Uttermost; uttermost.com. Fixed lighting by World of Lighting; 813/253-3044.

THROUGHOUT: Hardwood floors, Rockingham in Cider, carpet, Vogue High Perspective in Sisal by Shaw. Windows and exterior doors by Pella Windows & Doors. Morgan interior doors by JELD-WEN. Front door hardware, Amherst in Satin Nickel; interior door hardware, Windham, in Satin Nickel by Kwikset. Halogen4, Marathon, and Natural Light lightbulbs by Philips. Heating and cooling, Dave Lennox Signature Series collection by Lennox. 10kW Automatic Standby Generator System by Briggs & Stratton. Accessories by Pier 1 Imports. Fixed lighting by World of Lighting.

EXTERIOR (pages 88 and 89) Stucco, Soapstone; siding, Potter's Clay; rafter tails, window trim, garage doors, screen doors, fascia, soffit and master trellis, Egret; Shutters, Weather Ship by ICI. Hardiplank smooth lap

■ SPECIAL SECTION

2004 IDEA HOUSE

siding and Harditrim smooth trim by James Hardie. Straight Face and Beveled Edge pavers in Burgundy; Tumbled Bourbon Street pavers by Boral Brick. Arlington lighting on garage in Acid Verde wash; Mitchell lighting at front entry by Charleston Gas Light. 15-inch Dutch standing seam roof, in Galvalume from Metal Roofing Alliance, manufactured by ATAS International, Inc. Architect Series Insulshield windows and doors in white by Pella Windows & Doors.

ENTRY (page 96) Walls, Great Wall; ceiling and trim, Frost by ICI. Finishing Touches door cabinet by Thomasville. Provenance woven wood shades in Tahiti fabric in Lagoon by Hunter Douglas. Rope & Medallion lamps by Wildwood Lamps & Accessories. Artwork, "Leafy Sea Dragon" by Lisa Landsman. Mirror by D&S Designs.

GREAT ROOM (pages 98 and 100) Walls, Great Wall; trim, Frost by ICI. Martinique rectangular cocktail table (page 100), square lamp table (page 98), and chairside chest (page 100); Jackson Square console (page 98); Fusion chairs in I3145-94 (page 98); Bogart Silver screen (page 98); Mon Amour left-arm chaise in N1912-56 (page 100); Bakersfield sofa in 2119-50 (page 100); dog-eared pillows in 2536-45/2119-50 and standard kidney pillows in T2551-96 (page 100); Color Café round dining tables (page 100); Simplicity dining chairs in N5950-94/1485-02 (page 100); Bogart Chateau Marmont bar cabinet (page 100) by Thomasville. Belle Meade fan in Antique Pewter/Dark Walnut by Hunter. Dining room tabletop accessories and tableware (page 100), and micro jute rug in Natural (page 98) from Pier 1 Imports. Stone Nautilus lamps by Wildwood Lamps & Accessories (page 98). Golden kentia palm (page 98) by NDI. Artwork, "Swirl Shell Open," "Shells," "Cone Shell I," "Cone Shell II," by Village Court; "Hunting Island Beach," "Palm Clusters I," "Palm Clusters II," by Jim Draper; "Large Vessel" glass, "Handkerchief" glass, by Douglas Taylor; "Mod Cocktail Party" (page 100), by Lisa Landsman. Dumaine sconces (page 98) by Flambeau Lighting.

KITCHEN & FAMILY ROOM (pages 102 and 104) Walls, Onionskin Tan; trim, Frost by ICI. Beaded board ceiling by AZEK. Urban Retreat Plaza hostess chairs in 4608-90 (page 102); bar stools in 0766 Duval 42. Bronzed Olive leather; Color Café rectangular dining table and Casual Contemporary 0538 side chairs; Windward Bay entertainment center (page 104); Central Park sofa in 1825-02 (page 104); Islands chair in 9500-47 (page 104); Bogart Lexi ottoman in 9500-45/9500-14 (page 104); Riverview end table and round end



table (page 104); by Thomasville. Stainless steel 20-cubic-foot bottom-freezer refrigerator; 48-inch Pro-Style gas range with convection; 48-inch Pro-Style hood and warming drawer; built-in countertop microwave by JennAir. Advanced cookware by Anolon. Medley Closed Louver doors in Buttercream (upper and lower cabinets); Medley Vintage doors in distressed Black Antique (center island); Medley Vogue doors in Buttercream (buffet) by Plain & Fancy Custom Cabinetry. Golden Wave/Juparana Royalton granite countertops from Ramos Marble & Granite. Tile backsplash in Teakwood Sandstone by Dal-Tile. Venetian backsplash inserts in VG113 and VG133 by Crossville. Khaya mahogany island top by Spekva. Vision VNX-160 stainless steel sink; FF-780 faucet in Satin Nickel; Little Butler waste disposer and dispensing system in Satin Nickel by Franke. Micro jute rug in Natural from Pier 1 Imports. Grass, pears, pickled olives, asparagus, and kumquat tree by NDI. Olla III lamp (page 104) and three-tiered trays by Wildwood Lamps & Accessories. Whiskers draperies in Hi Tan by Robert Allen. Caribbean Breeze ceiling fan in Bronze/Antique Wicker by Hunter. Pinwheel

rug (page 104), striped pillow (page 104), accessories from Pier 1 Imports. Artwork, "Island Palms I," "Cumberland Island Palms," "Riverscape I," and "Riverscape II" by Jim Draper. Wine from Woodbridge Winery.

PANTRIES (page 106) Butler's pantry walls, trim, Frost by ICI. Mini-coffered ceiling tiles by M-Boss, Inc. Stainless steel under-countertop wine chiller and ice machine by JennAir. Merino doors in distressed Black Antique by Plain & Fancy Custom Cabinetry. Golden Wave/Juparana granite countertops from Ramos Marble & Granite. Water-polished tile in Nickel Silver by Crossville. Element PCX-110-21 stainless steel sink; E faucet by Franke. Wine from Woodbridge Winery. Kitchen pantry by California Closets.

MASTER SUITE (pages 108 and 110) Bedroom walls, trim, Frost by ICI. Beaded board ceiling by AZEK. Bridges panel headboard and footboard (page 108); Bogart Beverly Hills nightstands (page 108); El Capitan in 1485-02 (page 108); Aruba chaise longue ottomans in 0761 LOHR 02 Wheelwright (page 108); Bogart Hollywood vanity stool in 1119-50 (page 110) by Thomasville. Tosca quilt cover (page 108); Euro shams and Plazza sheets and shams in Ivory (page 108); Mohair throw in Beige Ivory. Affresco robe and Fresco Honeycomb bathrobe in Sand (page 110) by Yves Delorme. Vignette 4-inch-fold window shades in Cultured Pearl Satin Stripe with darkening by Hunter Douglas. Draperies in Pecan by Pollack. Mar



Pier 1 Imports. Artwork, "Elongated Palms," "Small Sepia Palm," "Green and Yellow Fish," and "Red Fish with Teal Striped Face" by Village Court. Closet design by California Closets. Raymond Waites Vintage Garden lounge chair and ottoman (page 108) by Laneventure. Upholstery in Zen/Wren, drapes in Canvas/Camel by Sunbrella. Pillows in Sunbrella fabric in Waves/Moonglow by Laurie Bell. Clare sink base, grille doors and Toto Rendezvous sink from American Antiques. Atrio Low Spout Lavatory Wideset Grohe. Ohio power flow jet tub by American Limestone in Jerusalem Stone Mocha from F&G Granite. Equisetrum by NDI. Mirror by Uttermost.

OFFICE (page 114) Walls, Ochre Tan; trim, Brown by ICI. Faubourg home office center console table; saw-horse table; Rattan Target hostess chairs by McGuire. Provenance woven wood shades in fabric in Onyx by Hunter Douglas. Century of Style fan in Satin Black with Brushed Nickel trim. Golden kentia palm by NDI. Artwork, "Village Waters," "Silent Morning," "Work Boats," "Sails Triptych," and "West Indies" from Village Court. Desk accessories by Wolf.

UPSTAIRS (pages 116 and 118) Sitting room walls, Great Wall; trim, Frost (page 116); bedroom walls, Burma Road (page 116); bathroom walls, Pale Moss/Indian Corn; ceiling and trim, Doric Cream (page 116); bedroom walls, Chemayo Sage; trim, Wellington (page 118); twin bedroom walls and trim, Reseda Chardonnay White by ICI. Oxford chair in E K9037-32 (page 116); Visaya ottomans in H2464-91 (page 116); Urban Retreat linen club chair in K9037-32 (page 116) Suzann bed in 2302-03 (page 116); Urban Retreat board and footboard (page 118); Summer headboards (page 118); Urban Retreat apothecary chest (page 118); by Thomasville. Duette honeycomb in Beach Shells Panache Semi-Opaque white (page 116); Silhouette 2-inch-vane window in Counting Sheep Bon Soir (pages 116 and 118) by Hunter Douglas. Micro jute rug in sitting room boucle rug in bathroom (page 116) from Pier



Take your ceilings from boring to
BRILLIANT

over 100 patterns

11 specialty finishes

2' X 2' panels

nail-up or lay-in

M-Boss Inc. tin ceilings add character, beauty and charm to any waterfront home. Panels are easy to install, affordable and durable to all climates and conditions. Contact M-Boss Inc. for a free brochure or visit us online today.



www.mbossinc.com

Toll Free:

866-PANELS-8

[866-726-3578]

French wooden cogs from J. Tribble Antiques. Triomphe bedding in Honey and Ecru (page 116); Ficus towels in Sage (page 116); Lumio boutis bed cover in Ecru/White (page 118); Capri shams in White (page 118); Ellysé shams in White (page 118); Ruffled Triomphe pettiskirt in White (page 118); Corail duvet covers and shams in Green (page 118); Gien sheets and shams in Green/White (page 118); Ruffled Echelle pettiskirt in White (page 118) by Yves Delorme. Bathroom mirrors (page 116); Dragonfly Lamp (page 118) by Wildwood Lamps & Accessories. Ceramic bathroom floor. Pottery 100 in TG564 by Shaw. Spider orchid by NDI. Shower curtain, Millie's Dot in Lullaby by Richard



Bernard. Artwork, "Sand Marsh" and "Edisto River Marsh" (page 116); "Pale Green Healing Palm" (page 116); "Gulf Breeze I & II" and "Rice Gate" (page 118); "Everglade Flamingos" (page 118) by Jim Draper. Original Pawleys Island DuraCord Rope Hammock from The Hammock Source. Easy Care Decking in Winchester Grey by Trex. Beaded board ceiling by AZEK. Camino real chaises and club chairs by Laneventure. Upholstery in Spa Weave fabric by Sunbrella. Pillows in Sunbrella fabric in Mariposal/Chili, Waves/Paprika, and Dulcimer/Moonglow by Laurie Bell. Floor lamps C02-D03 with Sunbrella fabric shades in Sesame/Chile (page 118) by Outdoorables. Outdoor Elements ceiling fan in Raw Aluminum/Bleached Oak by Hunter. Seabrook outdoor lighting in Acid Verde Wash by Charleston Gas Light.

GUEST COTTAGE (page 120) Bedroom walls and trim, Shenandoah Valley; bathroom walls, Rill Green by NDI. Bedroom ceiling in Rolled Bamboo by Bauer International. Beaded board bedroom walls by AZEK. Barbara Barry caned bed and chaise; oval stump table by McGuire. Roland duvet, fitted sheet and shams in White; gauzier flat sheet and shams in White; Etoile towels in White by Yves Delorme. Provenance woven wood shades in Tahiti fabric in Lagoon by Hunter Douglas. Wellesley ceiling fan in brushed Nickel/Cherry by Hunter. Micro jute rug in Natural from Pier 1 Imports. Black bamboo by NDI. Artwork, "Serene" by Lisa Landsman; "Bay Landing," "His Egret," "Her Egret" by Jim Draper. Newport sink base from J. Tribble Antiques.

OUTDOOR KITCHEN (page 122) Easy Care Decking in Winchester Grey by Trex. Palm Beach by Mimi & Brooke round dining/game table, dining chairs and cocktail table; Habana Joe's Matahiva sofa, chair, and end table; five-burner grill and four-drawer unit refrigerator in Autumn sandstone siding by Laneventure. Regatta RGX-620 stainless steel sink and BFT-280 faucet by Franke. Sofa upholstery in Polka/Truffle; chair upholstery in Litchfield/Bamboo by Sunbrella. Pillows in Sunbrella fabric in Waves/Paprika, Litchfield/Bamboo, and Fret/Spice by Laurie Bell. Floor lamp C03-D02 with Sunbrella fabric shade in Cayenne; table lamp C13-F02 by Outdoorables. Micro jute rug in Natural by Pier 1 Imports. Succulent, agaves, and limes by NDI.

OUTDOOR LIVING (page 124) Raymond Waites Vintage garden chaises; Hemingway chairs, ottomans, console tables, bistro tables, and high dining chairs by Laneventure. Chair and ottoman cushions in Palazzo/Spa; chaise cushions in Jazz/Parchment by Sunbrella. Pillows in Sunbrella fabric in Dulcimer/Moonglow, Waves/Moonglow, and Spa Canvas by Laurie Bell.

Accessories chosen by designers from Barnes & Noble, barnesandnoble.com; Bed, Bath & Beyond, bedbathandbeyond.com; Shell Horizons, shellhorizons.com; Target, target.com; and Tuesday Morning, tuesdaymorning.com.

DESIGN TEAM: DESIGNER, Lovelace Interiors, Destin, Florida; 904/837-5563 or lovelaceinteriors.com.

BUILDER, Bayfair, Tampa, Florida; 813/875-3800 or bayfair.com.

ARCHITECT, Cooper, Johnson, Smith, Tampa, Florida; 813/273-0034 or www.cjsarch.com.

LANDSCAPE DESIGN, Amenity Architects, LLC, Atlanta, Georgia; 770/433-1557 or amenityarchitects.com.

For more information on MiraBay, call 813/645-1000 or visit mirabay.com.

For information on tours of the 2004 Idea House, call 866/854-4072.



Exclusive new releases by Florida artist Jim Draper.



Jim Draper's latest limited-edition prints in a variety of themes, sizes and affordable prices are now available exclusively from www.baystreeteditions.com



The Original Family Reunion



800-643-3522 www.pawleys.com



www.americanwhirlpool.com
800/327-1394

The American Whirlpool Products, Inc. award-winning design and quality craftsmanship have provided outstanding whirlpool bathtubs, combination baths, air baths, and in-ground spas for over 26 years. Our Builder Line, State Line, and the Bay Series provide models for every budget. 31 models in nine styles with 30 of today's hottest colors plus a fully-automatic, self-contained sanitizing system.



www.anolon.com
800/388-3872

Anolon Gourmet Cookware. Designed for those who understand the importance of quality nonstick gourmet cookware and fine dining. Now, introducing Anolon Advanced gourmet cookware, featuring soft, cool Anolon SureGrip™ silicone handles and the most advanced nonstick—inside and out.



www.aol.com

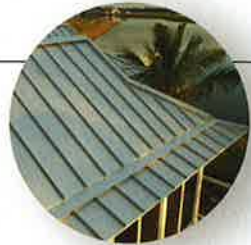
Add AOL for Broadband on top of your basic high-speed Internet connection for a premium broadband experience. AOL for Broadband is the best source for entertainment, music, sports, news, and information on the Internet, with exclusive programming and features. Built-in online safety and security tools, advanced communications tools, and custom spam filters are included along with the option to share with multiple computers.



www.atas.com
800/468-1441

Atas International, Inc. is one of the nation's leading manufacturers of metal roofing, wall, and ceiling panels for commercial and residential use. Concave, convex, tapered, and tile and shake facsimiles are their specialty. Custom formed accessories and flat stock are also available. ATAS can be a single source supplier for any project. Member of the Metal Roofing Association.

COASTAL LIVING.
Idea House
resources



AZEK® Trimboards is a line of cellular PVC trim products with the look, feel, and even sound of clear lumber. The AZEK Trimboards family of products features the unequalled combination of uniformity, durability, workability, and beauty. Available in regular lumber profiles, the company also features AZEK Beadboard, Cornerboard, Sheet, Adhesive, and the new Rontair Series, with a rustic frontier texture available in trimboards and cornerboards.



www.azek.com
877/ASK-AZEK

Briggs and Stratton Power Products Group, LLC is the outdoor power equipment manufacturing division of Briggs & Stratton producing pressure washers, portable generators, standby generator systems, outboard motors, welders, and pumps. All of our products are supported by a network of more than 30,000 authorized service dealers worldwide.



www.homegeneratorsystems.com
800/732-2989

California Closets believes that when you organize your home, you simplify your life®. We create custom organizational solutions to help you stay organized in room after room of your home. We offer a wide variety of configurations, finishes and styles to meet your needs, your lifestyle and your budget. Call today for a free in-home consultation or visit our Web site.



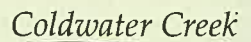
www.calclosets.com
866/892-1878

Charleston Gas Light. The romance of the Gas Light Era returns with Charleston Gas Light's historic lantern designs in high-quality copper and brass. Complimentary to any architectural style, each lantern is designed for residential or commercial use, in gas or electric. All lanterns are UL listed and hand-crafted in the USA.



www.charlestongaslight.com
800/GAS-LITE

Coldwater Creek is a multi-channel retailer of women's apparel, gifts, jewelry, and accessories, sold through a growing number of retail stores across the country, our e-commerce Web site, and our own direct-mail catalogs.



www.coldwatercreek.com
800/262-0040

FRANKE

www.frankeksd.com
800/626-5771

Franke of Switzerland, maker of stainless steel and titanium sinks, plus faucets, accessories, water filtration systems, and a line of lavatory sinks and faucets. Created for Franke by Villeroy & Bosh is a new series of fireclay sinks.

YUKON XL DENALI

www.gmc.com/yukon

GMC. Presenting the Yukon XL Denali with Stabilitrak, an engineering advance that actually helps your vehicle respond more accurately and predictably to your steering commands. By using a computerized system, Stabilitrak adjusts engine speed and brake pressure to help correct understeer and oversteer, and keep you safe. Now that's peace of mind. Professional grade engineering. It's not more than you need. Just more than you're used to.

GROHE

www.groheamerica.com
800/201-3407

Grohe offers a complete line of European designed, German-engineered kitchen and bath faucets plus shower products, the leading brand for custom homes and upscale remodeling. Innovations such as pull-out spray kitchen faucets, single-hole centerset lavs and thermostatic shower safety valves are just a few of the concepts brought to the U.S. by Grohe.

HunterDouglas®

www.hunterdouglas.com
800/937-STYLE

Hunter Douglas Window Fashions offers custom window coverings that not only transform your windows, but the way you live in and enjoy your home. Innovations include Duette® honeycomb shades, Silhouette® window shadings, Luminette® Privacy Sheers, Vignette® window shadings (featured), Alouette® LightLouvers, Provenance® woven woods, Heritage® hardwood shutters, and more.

HUNTER

www.hunterfan.com
800/4-HUNTER

Hunter Fan. Families have long trusted the Hunter Fan Co. name for its timeless and innovative designs, dependability and cost efficiency. From Hunter's unique WobbleFree™ Canopy mounting system for perfect fan balance and easy mounting to its whisper-quiet AirMax™ motor, Hunter has stood the test of time. For more information, call, or visit our Web site.



J. Tribble Antiques. Stylish custom sink bases with the features of fine furniture. Hand-crafted in England, Italy, and America. Solid, veneered, and hand-painted, these cabinets can be adapted to the shape, dimensions, and finish of your room.

James Hardie Siding Products. Nothing affects curb appeal and ultimately the value of a home like the exterior siding. James Hardie® siding offers the beauty and character of natural wood without the maintenance problems like rotting and cracking. James Hardie siding is non-combustible and resists damage from termites, rain, hail, snow, salt air, and hurricane force winds.

Jeld-Wen® Interior Molded Wood Fiber Doors offer style and substance in a variety of styles to suit any décor. The classic look of wood in either wood-grain or smooth finish coupled with durable performance gives you reliability at every turn. Many sizes are available, with a variety of options offering not only style but piece of mind. Five-year limited warranty.

Jenn-Air. From downdraft cooktops, wall ovens and Pro-Style® ranges to dishwashers and refrigerators, Jenn-Air offers a full line of built-in kitchen appliances. Consumers interested in more information on Jenn-Air's kitchen products should call, log on to our Web site, or visit our local retail partner, Florida Builder Appliances.

Jim Draper. The art of Jim Draper is now available as affordable limited-edition prints on canvas and paper through Bay Street Editions. Draper's art represents the resilience of nature and brings a unique spirit of strength to any environment. Visit us online to view the entire range of Draper's available work.

J. TRIBBLE
Antiques

www.jtribbleantiques.com
888/652-6116

James Hardie®
SIDING PRODUCTS

www.jameshardie.com
866/4-HARDIE

JELD WEN.
WINDOWS & DOORS

www.jeld-wen.com

JENN-AIR

www.jennair.com
800/JENN-AIR

BAY STREET
EDITIONS

www.baystreeteditions.com/draper

Kwikset
THE BEAUTY OF STRENGTH™

www.kwikset.com

Kwikset. There is hardly a door made that Kwikset can't make more secure—or attractive. Which is why more people trust their doors, inside and out, to the strength and beauty of Kwikset. America's #1 selling lockset. Get a handle on the full range of Kwikset designs and finishes at our Web site.



Laneventure

www.laneventure.com
800/235-3558

Laneventure—Your resource for America's leading line of wicker and rattan furniture and much more. From the indoor Excursions and Tradewinds lines to the acclaimed Weathermaster line of outdoor furniture, Laneventure covers the entire home. Order your free *Designs for Outdoor Living* magazine today.

LENNOX

www.lennox.com
800/9-LENNOX

Lennox. An Industry leader and technology innovator, Lennox continually strives to create products that let people enjoy a better standard of living. The Dave Lennox Signature™ Collection represents the best Lennox has to offer. Engineered with SilentComfort™ and air purification technology, Dave Lennox Signature Collection home comfort and indoor air quality systems include the most innovative and reliable feature available.



www.mbossinc.com
866/PANELS-8

M-boss Inc. Tin ceilings by M-Boss Inc. are being used in fine homes across America. We manufacture over 100 patterns in 11 specialty finishes and our panels are easily installed (nail-up or lay-in to suspension grids). Uses are limited only by your imagination. Backsplashes, door insets, moldings, wainscoting, and ceilings are just a few ideas.

M c G U I R E

www.mcguirefurniture.com
800/662-4847

McGuire. Known among connoisseurs as the symbol of excellence for over 50 years, McGuire is internationally known for creating high-end designer furniture handcrafted of rattan, solid teak, bamboo tables, aluminum and laced rawhide. Also featuring lighting, textiles, and accessories.



Original Pawleys Island DuraCord® Rope Hammock.

Handcrafted in a century old tradition, the Original Pawleys Island Rope Hammock in antique brown is weather resistant and fade resistant while maintaining the soft feel of cotton.



www.pawleys.com
800/643-3522

Pella. Viewed to be the best, Pella windows and doors are known for their unmatched beauty, durability, performance, and exclusive options. Pella offers a complete line of Dade County-approved Hurricane Impact Products too. If you are building a custom home, you deserve a custom quality window and door product.



www.pella.com
800/84-PELLA

Philips Lighting. Whether remodeling or redecorating your home, rely on Philips Lighting Company to enhance your house, both inside and out. With an array of lighting options, Philips plays an integral role in the design process. Three product lines, Halogená, Marathon and Natural Light create distinguished lighting effects at little cost, save money by lighting the home more efficiently and brighten darker spaces with color-enhancing light.

PHILIPS

www.lighting.philips.com/nam/
800/555-0050

Pier 1 Imports. As seasons change, so do our one-of-a-kind furnishings. From comfy armchairs to warm throws and scented candles, you'll find all you need to feel right at home for Fall. So button up your overcoat and head on over to your favorite Pier 1. We'll take good care of you.

Pier 1 imports

www.pier1.com
800/245-4595

Plain & Fancy Custom Cabinetry, a 35-year-old, family-run company, stands for quality workmanship well within your reach. The company carries no inventory; each kitchen is built to the homeowner's specifications from wood species and door style to standard and custom hand rubbed finishes.



www.plainfancycabinetry.com
800/447-9006



www.sunbrella.com

Sunbrella® brand fabrics offer beautiful designs with legendary performance for home furnishings that are both stylish and durable. And with today's sun-drenched living spaces and families on the run, Sunbrella fabrics are an ideal choice for indoor and outdoor décor. Offered in a palette of stunning designs and colors, a selection of Sunbrella fabrics is available at Calico Corners.



www.suntrust.com
800/SUNTRUST

SunTrust Banks, Inc., with assets of \$125 billion, is one of the nation's largest and strongest financial holding companies. SunTrust provides traditional banking services, mortgage banking, insurance, asset management, brokerage and capital market services. 1,200 branches and 2,225 ATMs serving Florida, Georgia, Maryland, Tennessee, Virginia, and the District of Columbia.



www.thomasville.com
800/225-0265

Thomasville can help you define the personality of any room. From rich and elegant to relaxed and colorful, you'll find a range of beautiful, well-crafted furniture and upholstery to fit your style. Visit us online or call for more information.



www.trex.com
800/BUY-TREX

Trex®. Trex decking and railing lets you create a deck unlike any other. Trex products' wood/plastic composition allows you to create curves and unique designs not possible with other decking materials. With five colors and fantastic durability, there is no need for staining or sealing for protection. Enjoy your deck.



www.woodbridgewines.com
888/766-6328 x2839

Woodbridge Winery. For 25 years, we have aged our wines in small oak barrels and handcrafted each vintage. Come visit us at our winery for a tour and tasting, or learn more about our wines at our Web site. Woodbridge. Taste our small winery tradition.™



Quicklist

of sub-contractors

resources

Artistic Prints
The Court, 910/693-0327

Artistic Photography
bellphotos.com, 850/893-0511

Barwork
Landsman, 813/362-0344

Classical Reproductions
Classical Decorations, Inc., (NDI), 800/522-2627

Countertop Distributor
Coc Materials, Inc., 813/886-7761

Countertop Installation
by Brick Pavers, Inc., 813/902-1208

Countertops
Bricks, 800/5-BORAL-5

Cabinet Designer
Berberich, 941/809-5010

Cabinet Supplier
Class Kitchen & Bath, 941/924-6999

Central Vacuum
Vacuum of Tampa, Inc., 813/872-7844

Ceramic Tile Labor
Mer Tile, 727/527-5465

Closet Systems
Carmia Closets of Tampa, 727/573-0700

Countertop Tops
Marble and Granite, 813/253-2620

Countertop Tops
Bay Design Center, 813/837-5226

Countertop Accessories
Designs, 866/289-9653

Drywall Labor
Robert Green, Inc., 813/977-0760

Electric Labor
Beachem Brothers Electric, 941/365-1919

Exterior Louvers & Shutters
Adams and Bogue Enterprises, 727/526-9068

Exterior Trim Labor
T and T Construction, Inc., 813/973-3147

Exterior Trim Material
Cox Lumber Company, 813/645-6451

Flooring
Shaw, 800/441-7429

Garage Doors
Banko Overhead Doors, 813/882-9900

HVAC Labor
The Alert Company, 813/626-4111

Interior Doors
Jeld-Wen Premium Wood Doors, 920/235-7170

Interior Electric Fixtures
World of Lighting, 813/253-3044

Interior Trim Labor
Dobbin Construction, 727/781-7424

Lamps
Wildwood Lamps & Accessories, 252/446-3266

Landscape Lighting
Aurora Outdoor Lighting, 866/630-5071

Landscaping/Sod/Sprinklers
Landscaping Tune-Ups, Inc., 813/986-7241

Laundry Cabinets
Castor, 813/254-1171

Metal Fencing
Artistic Aluminum Inc., 813/671-4441

Metal Roof Installation
Signature Roofing, 813/986-8009

Metal Roof Supplier
Bradco, 813/621-7543

Outdoor Lamps
Outdoorables by Frederick Cooper & Tyndale, 773/384-0800

Outdoor Pillows
Laurie Bell, 336/362-4133

Paint Labor
Neely and Sons Painting Co., Inc., 863/607-8337

Paint Material
ICI Paints, 813/877-5841

Plumbing Labor
Parson's Plumbing, Inc., 813/684-9854

Sculptures
Douglas Taylor, Jr., 813/731-2633

Security/Structured Wiring
Structured Technologies, 813/251-5170

Security/Structured Wiring
Elan Systems, 877/289-3526

Shell Mirror
D&S Designs, 770/781-5339

Swimming Pool
Riviera Pools, 813/961-2358

Washer/Dryer
Maytag, 800/688-9900

Wood Floor Labor
Kampmann Hardwood Floors, 727/781-0415



Yves Delorme's luxurious linens for the home are created in the finest European tradition. Fashionably coordinated patterns and colors let you design a custom look to capture every mood and complement any setting, from classically romantic to sleekly contemporary.



www.yvesdelorme.com
800/322-3911