

West Bay Landing

Borrow ideas from this innovative weekend home, and live in casual comfort.

The plan started with the idea of a simple, one-room-wide design that accommodates great cross ventilation and balanced light," says Ted Flato, one of the architects for our exciting and unique Florida Idea House. Located on the Great Northwest Coast near Panama City Beach, West Bay Landing is part of RiverCamps on Crooked Creek. RiverCamps, a development of the St. Joe Land Company, occupies a 1,500-acre inland nature preserve.

"St. Joe has owned this magnificent piece of land for more than 60 years," says Kevin Fox, vice president of RiverCamps. When completed, the community will also include a swimming pool, library, fitness center, outdoor dining pavilion, boat dock, and other facilities.

The construction is by builder Paul Thrasher and his team of craftspeople from Lynn Haven, Florida. Paul used cypress and pine throughout the 2,051-square-foot home to give warmth and character to the design. "People can learn a lot from the details in this house, from paneling on interior walls to mechanisms that hold the wooden support columns to their concrete foundations," Paul says.

Designers for West Bay Landing were Susan Lovelace and Patricia Kramer. Susan says, "For the interiors of this home, we used natural elements that you would picture in the most delightful camp an adult could ever imagine."

Going Back

Vintage cottages inspired many aspects of this home, including the long front stairway, the porches, and the galvanized metal roof, which cools the house by reflecting sunlight. "The early, simple houses on the coast are great to learn from," says Ted Flato. "They were built well and built to last."



Screened Porch

ASSISTANT PHOTOGRAPHER: MARY MARGARET CHAMBLISS



by Julia Hamilton / photography Jean Allsopp / styling Cari South



idea #1

Expand With a Screened Porch

Outdoor living spaces make West Bay Landing seem much larger. "We designed screened porches as well as open porches," says architect Jonathan Card. "One even has a fireplace so that in the cooler months, with the protection of the house on one side, it's still a very pleasant place to be."

A large screened porch runs from the front of the house to the rear, nearly doubling the size of the first floor. Wooden rafters and metal roofing remain exposed, emphasizing





informality and regional style. Doors on this porch open to the dining room, kitchen, and master bedroom, so there is a nice flow, and the house can be open regardless of the weather. Chairs and a sofa are centered around the brick fireplace. Wooden daybeds constructed to fit single bed mattresses fill the other corner of the porch and can be used for both sitting and sleeping. For easy maintenance, the designers used colorful acrylic indoor/outdoor fabrics on the furniture.

Iron lanterns and other rustic items serve as accent pieces on the screened porch. Found objects add interest and character, says designer Susan Lovelace. "Something nostalgic is always comforting," she explains.

Creative Kitchen

The kitchen stands at the center of the house. On both kitchen and dining room walls, cypress 1 x 10s alternate with 2½-inch-wide boards; an ⅛-inch gap separates them. A sheer ivory-colored finish was applied to the horizontal cypress paneling, giving a light and airy feel.

Here, the open storage is both a means of displaying cookware and an example of creative shelf design. The



idea #2 Use Wood on Walls and for Open Shelving

1½-inch-thick wooden shelves rest on metal supports and hang from pieces of 1-inch-diameter galvanized pipe. The open shelving is great for showcasing serving pieces and pottery, and guests love them because they can easily find needed items.

Going Upstairs

The stairway in the kitchen features photographs of Florida landscapes. On the second floor, the sloped ceiling gives a feeling of spaciousness to the hallway, laundry room, guestroom,

and children's room. A collection of framed photos creates a gallery-like display in the upstairs hallway.

Fine Dining

The dining room has natural, hand-made elements, which offset the clean lines of the house. The designers used a striped woven rug under the dining table, and an old-fashioned pie safe stores china and glassware. Glazed pottery for the table settings mixes in shades of red and green that are used throughout the interiors. ▶



AWARD-WINNING ARCHITECTS

The architects of West Bay Landing are Ted Flato, Craig McMahon, and Jonathan Card of Lake/Flato in San Antonio. They received the American Institute of Architects National Firm Award 2004 in recognition of their diverse design projects such as family retreats, museums, arboretums, and corporate headquarters.



Family Room

Family Style

Linen cafe curtains hung from an iron rod bring privacy to the family room, and a wooden bench serves as a coffee table. Because this room has windows on three sides and opens to the dining room, furniture arrangement was a special consideration; most pieces are placed about 1 foot away from the windows.

To avoid having the entertainment/bookshelf unit take up floorspace, it was fitted into a box bay constructed on the exterior wall. A pair of doors mounted on tracks slide away from the center of the unit, over the bookshelves at each side, and then back across to cover the flat-screen TV. ▶



idea #3

Add Sliding Doors to Built-ins



idea #4

Office

Design a Small But Well-Equipped Office

Office Hours

Adjoining the dining room is a home office measuring only 7'11" x 5'2", yet there's room for a laptop, fax machine, and files.

"Adding space where you can work will theoretically buy you a longer weekend at RiverCamps," says architect Jonathan Card. "Say you have

three hours of work that has to be done on Monday morning. Just get up early, knock out those three hours, and you'll be enjoying yourself out on the water by noon."

The office feels like a spacious tree house perched high in the woods. Its glass walls also bring light to the windowless dining room. ▶

SINK SOLUTION

Looking for a compact bathroom sink to fit into a tight space? Try this idea on for size: In the powder room, a metal milk bucket resting on a wooden, three-legged stool was plumbed for use as a sink.



Powder Room

"For the interiors of this home, we used natural elements that you would picture in the most delightful camp an adult could ever imagine."

Susan Lovelace, designer



NATIONAL SPONSOR LENNOX

Systems from Lennox provide indoor comfort year-round. They are efficient, reliable, and quiet as well as environmentally responsible. So when you need a new system, do your homework, and get the one that's best for you. For more information about all of the home-comfort products available from Lennox, call 1-800-9-LENNOX, or visit www.lennox.com.



NATIONAL SPONSOR JELD-WEN INTERIOR DOORS

Distinctive interior doors from JELD-WEN accentuate the architectural character of this Idea House. Each door design is available with ProCore The Quiet Door™ option that muffles sound. For additional information about the complete JELD-WEN Interior Door line, call 1-800-877-9482, or visit www.jeld-wen.com.



idea #5

Children's Room



Children's Bath

Have Fun With Color

Dreamy Bedrooms

In a house where areas are primarily neutral, the children's room offers a bright departure. "The more color we added, the better it got," says designer Patricia Kramer. Surfaces here and in the adjoining bath are painted lime green and orange sherbet; fabrics in a mixture of colors and patterns reflect youthful enthusiasm. "Children use every hue in the crayon box, and that's the approach we took in this bedroom," Patricia explains. Windows are located on three walls, and each sports a different fabric treatment. With a full-size bed and a twin-size one with a trundle, the room easily sleeps four. ▶



NATIONAL SPONSOR JAMES HARDIE

James Hardie Siding Products are made of fiber-cement, and they possess the character of natural wood with increased durability. Some products now come in a selection of colors, so they don't need to be painted. Both lap siding and board-and-batten siding are used at West Bay Landing. For more information call toll-free 1-866-4-HARDIE, or visit www.jameshardie.com.



NATIONAL SPONSOR TREX DECKING & RAILING

Made primarily with recycled plastic grocery bags, reclaimed pallet wrap, and waste wood, Trex decking is environmentally responsible. At West Bay Landing, Trex forms the floor of the screened porch and surrounds the outdoor kitchen. For more information call 1-800-BUY-TREX (289-8739), or visit www.trex.com.



Guestroom

The guestroom bed is dressed in cool aqua linen and soft ivory damask. The ivory curtains on the windows behind the bed can be pushed together to give the illusion of a headboard. Built-in seating fits between the closet and a drawer unit that also holds a TV.

Downstairs, the master bedroom boasts a comfortable, casual bed with head- and footboards that resemble charming old metal gates. It's piled high with colorful, coordinating pillows in various sizes. Rattan chairs fitted with plush cushions stand at the end of the bed. ▶



Master Bedroom

OPEN VANITY BASE PROJECT

The vanity in the guestroom bath is a *Southern Living* Project Plan. Measuring 54½ inches wide x 24 inches deep x 34 inches high, it holds a sink and has a storage shelf underneath.

Detailed plans and step-by-step instructions for the Open Vanity Base Project are available for \$4. To order send a self-addressed, stamped (with two first-class, letter-rate stamps), business-size envelope to Open Vanity Base Project, *Southern Living* Projects, P.O. Box 523, Birmingham, AL 35201. Please enclose a check for \$4 payable to *Southern Living* Projects. Allow six to eight weeks for delivery.



Guest Bath



NATIONAL SPONSOR SQUARE D

The SQUARE D Multi-Link System makes it easy to establish telephone, television, stereo, computer, and security systems throughout a home. With this technology, you can perform tasks such as accessing your home's security system on the Internet and adjusting the comfort system before you arrive. The SQUARE D Multi-Link System adapts to your needs. For more information visit www.squared.com.



NATIONAL SPONSOR SUBARU

As sporty as it is sensible, the all-wheel-drive Subaru Forester provides great handling and performance in all driving conditions. You'll love its practicality: There's plenty of carpeted cargo room, and the rear seats fold to create even more. Features such as leather-trimmed interior and moon roof will enhance your driving experience. For more information visit www.subaru.com.



Mudroom



idea #6

Make Your Entry a Practical Space

Maximizing the Mudroom

The front door opens directly into a mudroom, not a conventional foyer. Residents of RiverCamps are likely to have plenty of fishing tackle, canoe paddles, coolers, and other outdoor gear to store. This area gives all of those items convenient berths. There's also a long sink for cleaning the day's catch.

Architect Craig McMahon says, "The slat walls of the mudroom are a bit like the old storage lockers that you see on piers. Inside, you have an open storage system for all the gear that makes being near the water exciting."



Narrow strips of screen fitted between the horizontal slats help to keep the area insect free. A bench and other built-ins and a custom-made screened door at the entrance complete this useful room. ▶



NATIONAL SPONSOR GE APPLIANCES

For the gourmet chef or beginning cook, Profile appliances from General Electric have all the design features and technical capabilities that you want and need. The GE Profile Advantium® 120 Wall Oven is equipped with speed-cook technology. It heats up to eight times faster than a conventional oven. For more information visit www.geappliances.com.



NATIONAL SPONSOR JOHN DEERE

A Gator™ Utility Vehicle from John Deere will make working in your lawn and garden much easier. A full range of attachments enables you to customize your Gator. Also consider John Deere's walk-behind and riding mowers; they provide superior cutting and state-of-the-art engines. For more information visit www.johndeere.com.



NATIONAL SPONSOR BORAL BRICKS

To add fine craftsmanship and beauty to any home, build with brick. Here the fireplace, chimney, and outdoor kitchen are made of Boral Bricks, giving the house an established look. For more information or to locate a Boral Bricks Studio or distributor, call 1-800-5-BORAL-5, or visit www.boralbricks.com.



idea #7

Outdoor Room

Transform a Sun Porch

At the rear of the house's lower level, the brick-floored outdoor room is furnished with daybeds covered in red weatherproof cushions and framed by khaki curtains. The space makes an ideal sleeping porch for children, who can spread out their sleeping bags and "camp" overnight. To help keep the area free of insects while main-



taining ventilation, retractable screens are installed on each open side. The remote-controlled motorized screens can be raised or lowered at the push of a button. ▶

OUTDOOR DAYBED PROJECT

Measuring 75 x 39 inches, these daybeds would make a great addition to your porch. Plans are available for \$4. To order send a self-addressed, stamped (with two first-class, letter-rate stamps), business-size envelope to Outdoor Daybed Project, *Southern Living Projects*, P.O. Box 523, Birmingham, AL 35201. Enclose a check for \$4 payable to *Southern Living Projects*. Allow six to eight weeks for delivery.



NATIONAL SPONSOR BENJAMIN MOORE & CO.

Benjamin Moore Paints let you express your individuality and creativity when choosing colors. You can experiment, knowing that paint color is relatively easy to change when you're ready for a new look. At West Bay Landing, two coordinating colors highlight the exterior board-and-batten siding, and shades of lime green brighten the children's room. For more information visit www.benjaminmoore.com.



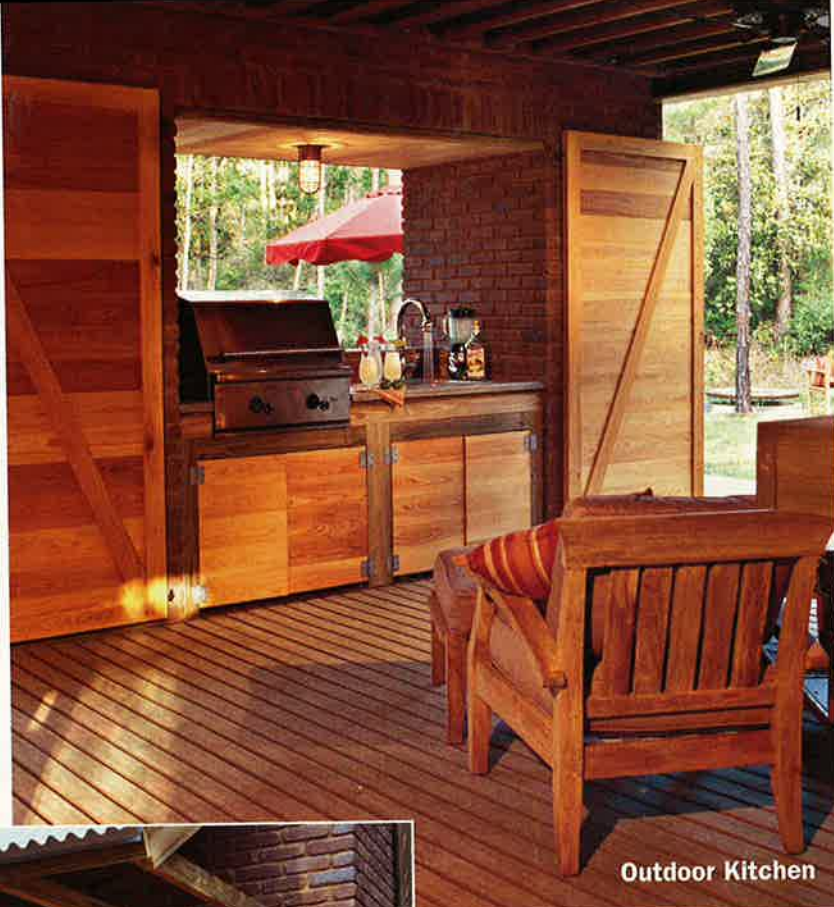
NATIONAL SPONSOR JELD-WEN WOOD WINDOWS—THE POZZI CUSTOM COLLECTION

For metal-clad or wooden windows, look to The Pozzi Custom Collection. Metal-clad windows in Pozzi's Redwood finish were chosen for the Florida Idea House. They are guaranteed not to chalk or fade for 20 years, even in coastal conditions. To locate a supplier near you or to receive a free catalog, call 1-800-257-9663, ext. PRSL.

In the Great Outdoors

Exterior spaces are put to maximum use in this creative home. "Many houses along the Gulf Coast are built up off the ground because of the possibility of a storm surge," says architect Craig McMahon, "and storage areas are often constructed under the house. We wanted to take advantage of all the ground floor space, so we created a variety of outdoor rooms, including a kitchen and shower." There's also room to park both a boat and a car.

Durability and easy upkeep factored into the selection of construction materials for this vacation home. "The metal roof will last a long time," say builder Paul Thrasher. "And with the fiber-cement siding, the paint job will last longer than if it was on wood."



Outdoor Kitchen



Idea #8

Install an Open-air Kitchen

At ground level, the base of the chimney houses the outdoor kitchen, which contains a sink, grill, and built-in cabinets. There is also a bar for serving. The entire kitchen can be made weathertight by closing wooden doors on two sides. A long table nearby can accommodate a variety of outdoor projects. Decking surrounds the kitchen; teak chairs, benches, and tables invite relaxation. ▶

A COMBINATION FIREPIT/FOUNTAIN

Near the deck is a unique, dual-purpose garden feature, in which a large, thick copper disc sits on a cylindrical stone base. To use it as a fountain in warm weather, the pump is turned on, and water from the base of the unit flows from the top of the stone and down its sides. The water is caught in a basin and pumped again to the top of the stone cylinder. In cooler weather, the fountain can be turned off and a fire built in the copper disc on top. Circular stone coping surrounds the entire installation.





Be an Honorary Pit Crew Member

FOR THE #4 SQUARE D DODGE
DRIVEN BY BOBBY HAMILTON!

Win the Square D Racing Team Honorary Pit Crew Member Sweepstakes and you and a guest will attend the Craftsman Truck Series race in Miami on November 19 with garage and pit passes plus Official Pit Crew Race Day Shirts and Official Team Hats. Spend the morning with the pit crew as they prepare the truck and participate in pre-race ceremonies, and then stay in the pit area for the entire race.

Register to Win and your prize will include a trip for two to Miami for the race courtesy of Delta Vacations.

Delta Vacations
deltavacations.com

To enter visit the Crooked Creek SOUTHERN LIVING Idea House at RiverCamps near Panama City, FL, or enter online at www.southernliving.com/squared.

Please, one entry per e-mail address only. You must be 21 to win.

See Square D® residential products featured in the SOUTHERN LIVING Idea House near Panama City, Florida.

For more Information about Square D residential products visit www.SquareDHomeNetworks.com

Southern Living



SQUARE D

OFFICIAL SWEEPSTAKES RULES

PURCHASING WILL NOT INCREASE YOUR CHANCE OF WINNING
ELIGIBILITY: Open to residents of the contiguous U.S., 21 or older, except employees of the Sponsors and their authorized distributors, vendors, contractors, their parent companies and the immediate family or persons living in the same household of any of the persons named above. Void where prohibited by law. **ENTRY:** Visit the Crooked Creek Southern Living Idea House at RiverCamps near Panama City, FL, and complete form or visit www.southernliving.com/squared to register. Must be received by 11:59 CDT, September 27, 2004. To enter by mail, print your name, address, city, state, ZIP Code, date of birth and day and evening phone numbers on a 3" x 5" card and mail to: Square D Pit Crew Sweepstakes, Attn: Kristin Prickett, 2100 Lakeshore Drive, Birmingham, Alabama 35209. Must be postmarked by September 27, 2004. **Limit:** 1 on-line entry per email address, one mailed entry per envelope. **DRAWING:** No later than October 22, 2004. Sponsors will select 1 winner in a random drawing. Odds depend on number on entries. **PRIZE:** Trip for 2 to the Craftsman Truck Series race at the Homestead-Miami Speedway including roundtrip coach transportation from the major airport nearest the winner's home, 2 nights standard, double occupancy accommodations at a hotel to be selected by Sponsors; Winner and Guest will have access to the garage area, will participate in all pre-race ceremonies and will be in the pit area for the entire race and receive a \$500 spending allowance. **ENV. \$2,330.** Costs not specified, including taxes, are the responsibility of the Winner. No substitution except at Sponsors' discretion who reserves the right to substitute prize of equal or greater value. **REQUIREMENTS:** Winner must sign an affidavit of eligibility and liability/publicity release. **GENERAL:** Sponsors' decisions are final. Sponsors reserve the right to cancel or modify Sweepstakes if Sweepstakes is corrupted. Sponsors are not responsible for technical malfunctions, printing errors, late/undelivered mail, or injury/damage to persons/property caused by prize. **E-MAIL PERMISSION:** For complete set of rules, visit www.southernliving.com/squared. Entry constitutes permission for Sponsors to use entry information for marketing. **RESULTS:** For name of winner, send a SASE to Request for Winner, Square D Pit Crew Sweepstakes, Attn: Kristin Prickett, 2100 Lakeshore Dr, Birmingham, AL 35209.



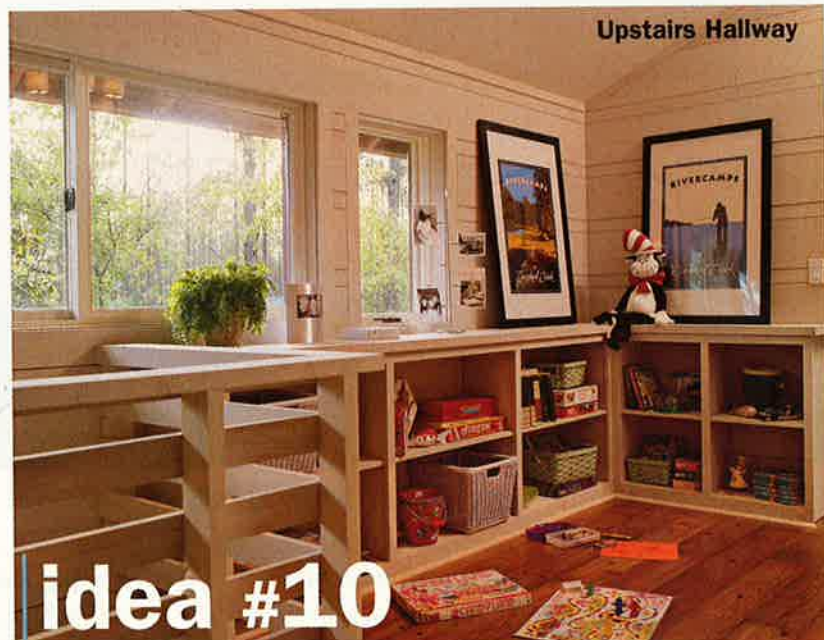
idea #9

Build an Outdoor Shower

An outside shower is a practical and fun feature. Trelliswork made from copper rods and wire and planted with rapidly growing Asian jasmine vines encloses the shower and connects it to a nearby dressing room. Above the shower, a cistern collects rainwater from the roof for use in the garden.



Outdoor Dressing Room



Upstairs Hallway

idea #10

Create a Play Space With Built-ins

Equipped with shelves for storage of games and toys, the upstairs hallway outside the children's room functions as a mini playroom. Kids can spread out board games or coloring books and enjoy

a sunny spot to play or color. Painted baskets attractively organize and store small items, making cleanup a breeze. Framed prints and family photos bring visual interest to the neutral space. ▶

I might not be your type — unless, of course, you're into the quiet, brainy type.



Introducing Infinity™ — one of the most advanced systems in the industry. It precisely controls temperature, humidity,

indoor air quality and ventilation — all with one easy-to-use control. Plus, it intuitively adjusts itself for peak performance to help you save on energy bills. Talk about being versatile. And the Infinity is just one of the many reasons why Carrier is trusted in more homes than any other brand.

Contact your local expert at 1-800-Carrier or www.carrier.com



Turn to the Experts.

©CARRIER CORPORATION
2004. A member of the United Technologies Corporation family.
Stock Symbol UTX.

Key Contributors

Architecture

Lake/Flato Architects, Inc.,
San Antonio
Ted Flato
Craig McMahon
Jonathan Card

Builder

Paul Thrasher Construction,
Lynn Haven, Florida
Paul Thrasher

Development

RiverCamps on Crooked Creek,
Panama City Beach
Kevin Fox
Marc Glissman

Interiors

Lovelace Interiors,
Santa Rosa Beach, Florida
Susan Lovelace
Patricia Kramer

For directions to West Bay Landing and the dates that it is open, turn to page 112.

Landscape Design

EcoPlan, Inc.,
Fort Lauderdale
Phillip Bogdal
John Harrigan

Charity

The Woman's Club of Panama City

National Sponsors/ Southern Living—St. Joe Preferred Partners

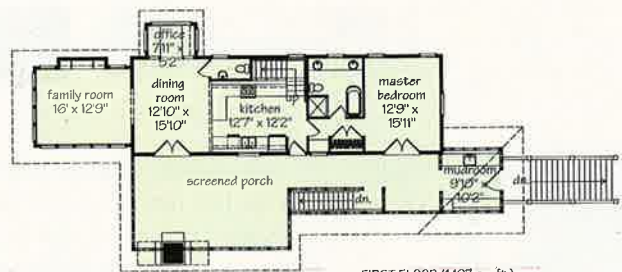
Boral Bricks
GE Appliances
James Hardie
JELD-WEN Interior Doors
Lennox
SQUARE D

National Sponsors

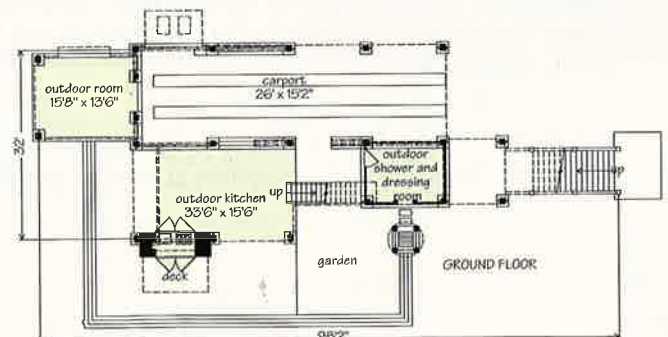
Benjamin Moore & Co.
JELD-WEN Wood Windows—
The Pozzi Custom Collection
John Deere
Metal Roofing Alliance
Subaru
Trex Decking & Railing



SECOND FLOOR (854 sq. ft.)



FIRST FLOOR (1,197 sq. ft.)



GROUND FLOOR

Special Thanks

Interiors and Furnishings

Accessories: Lily Pads
(Grayton Beach, Florida)
Accommodations: Jackie Rutherford
(DeFuniak Springs, Florida)
Antique fishing and nautical items:
DC Maps (Destin)
Antique floor lamp on table:
David Sheffield Antiques (Montgomery)
Antiques and accessories: Bienvenue
Vintage Home (Destin, Florida)
Antiques and accessories: Flavours of
France (Rosemary Beach, Florida)
Art in children's room: Karin Fectau
(Birmingham)
Art: Jim Draper, artist
(Jacksonville, Florida)
Art: Paige O'Connor Fine Arts
(Destin)
Baskets and accessories: Maine Cottage
(www.maineecottage.com)
Black-and-white photography: Sheree
Williams (Santa Rosa Beach, Florida)
Cabinet hardware: Gulf South Kitchens
(Fort Walton Beach, Florida)
Cabinet hardware manufacturer: Schaub
and Company (Grand Rapids, Michigan)
Ceiling fans: Magnolia Lighting
(Hernando, Mississippi)
Doormat and desk accessories:
Hable Construction (New York City)
Fresh fish: Buddy Gandy Seafood, Inc.
(Panama City, Florida)
Furniture: Keystone Country Furniture
(Aspers, Pennsylvania)
Furniture: Lovelace Interiors (Destin)
Furniture: Stanley Furniture
(Mandeville, Louisiana)
Interior planters and accessories:
Potager's (Destin)
Lighting and lamps: Shades of Light
(Richmond)
Minnow bucket lanterns: Sandy Gibbs
(Minnetonka, Minnesota)
Outdoor accessories: Bass Pro Shops
(Destin)
Outdoor fabric: Sunbrella Fabrics
(Glen Raven, North Carolina)
Outdoor furniture: Lane Venture
(Conover, North Carolina)
Outdoor lamps: Charleston Gardens
(Charleston, South Carolina)
Outdoor Room curtain fabrications:
Pate Meadows Designs (Birmingham)
Photographic art: Richard Bickel
(Apalachicola, Florida)
Porch daybed construction: Tim Henry
(Birmingham)
Pottery: Jenny Cason Crowson,
Spirit Song Studio (Oxford)
Pottery: Oxford Floral Company
(Oxford, Mississippi)
Rugs: Elizabeth Eakins Cotton, Inc.
(South Norwalk, Connecticut)
Sea grass rugs: Sharp Carpet
(Birmingham)
Table linens: Casa Blanca
(Seagrove Beach, Florida)
Tile and carpet: Coastal Color Center
(Panama City Beach, Florida)

Toys: Quincy (Seaside, Florida)
Willow Furniture: Around The
Bend Willow Furniture (www.around
thebendwillowfurniture.com)
Window treatment and bedding
fabrications: Duffy Morrison
(Birmingham)
Wood blinds and window treatment
hardware: Smith + Noble
(www.smithandnoble.com)

Building/Exterior Products

Audio/video: Sweet Spot Audio/Video
(Tallahassee)
Audio/video components: Wattsound
(Panama City, Florida)
Boat: The Ships Chandler Marine Sales
(Destin)
Brick mason: Bruce Joyner
(Panama City)
Brick paver installation: Stone Scapes
(Freeport, Florida)
Cabinets: Walker Cabinets
(Panama City)
Concrete countertops: Creative Concrete
& Tile (Youngstown, Florida)
Concrete: Quality Concrete
(Haven, Florida)
Copper fire pit: Mountains Edge Copperart
(Alberta, Canada)
Corian countertops: Southern Marble
(Panama City)
Custom millwork: Robert Peacock
(Panama City)
Drywall: Drywall Specialty
(Southport, Florida)
Electrical: Scott's Quality Electric
(Port St. Joe, Florida)
Floors: Hardwood Floors by Rushing
Enterprises (Panama City Beach)
Framing: LaCivita Construction
(Port St. Joe)
HVAC: Peaden Air Conditioning &
Heating (Panama City)
Insulation: Coastal Insulation
(Panama City)
John Deere equipment: Beard Equipment
Company (Panama City)
Landscape installation: Coastal Design
and Landscape, Inc. (Port St. Joe)
Metal roof: McElroy Metal
(Bossier City, Louisiana)
Painting: Specialty Finishes
(Atlanta)
Phantom Screens: EROF, Inc.
(Panama City)
Plumbing: Paris Plumbing Co.
(Southport, Florida)
Roofing: A&A Roofing
(Lynn Haven, Florida)
Shelving and door hardware: Innerspace
of Bay County (Panama City)
Siding installation: Denis Gevawer
(Panama City)
Superintendent: Brent Nelson
(Lynn Haven)
Tile: Creative Concrete & Tile
(Youngstown, Florida)
Trim carpenter: Robert Cassiere
(Lynn Haven)
Washstands: Eric Jones
(Woodstock, Georgia)
Wooden kayaks: John and Julie Eidson
(Panama City)

Lancaster™

Villa™



HUNTER
DESIGNER'S CHOICE.
CHOOSE THE STYLE THAT
SUITS YOUR CEILING.

Five beautiful fans with design
influences from classical to
contemporary. No matter how you
furnish your home, there's a
Hunter Designer's Choice fan that's
just your style.

State Street™

French Quarter™