

Welcome to the annual *Coastal Living* Idea House,
where our skilled team of architects, builders,
and designers have pooled their talents to create
almost 7,000 square feet of inspirational spaces just
steps from the Chesapeake Bay.

tidewater landing

TEXT AND STYLING BY LACEY N. HOWARD
PHOTOGRAPHY BY JEAN ALLSOPP AND HARRY TAYLOR



Each dawn, as the sun climbs high enough to make the cool Chesapeake Bay waters appear bright blue, a pod of dolphins swims parallel to Norfolk, Virginia's East Beach community shoreline. Their arching backs and dorsal fins break the water's surface, as if waving to early-morning shell seekers.

Behind sea oats and sand dunes rises our Idea House's three-story, shingle-clad facade. Exterior shingles painted deep green and a wraparound porch supported by sculptural columns call to mind old Norfolk style, hinting at the 700-home planned community's focus on vernacular Southern style. "Our vision was to create a unique neighborhood that would combine the quality of design and architecture with the quality of life we felt this area could generate," says East Beach managing partner Bart Frye.

The developers' master plan has been years in the



making—transforming a 100-acre urban area badly in need of redevelopment. "The city of Norfolk wanted to recycle this land instead of eliminating [undeveloped] green area," Bart says. The result, he says, will be a water-focused, pedestrian community between the

With the third of seven phases under way, the community takes an innovative approach to home design. The cottages, town houses, condos, and larger homes reflect Tidewater shingle, Arts and Crafts, Colonial, and Victorian styles, all formerly used in older Southern neighborhoods. To preserve each home's distinct look, the town architect and a review committee oversee all designs. Being surrounded by water generates a singular sense of community, says managing partner Bart Frye. "People can sail, boat, parasail, ski—the water is calm enough for all of that. You can even beach a boat here," he says. Bayfront miniparks extend beach access and views for interior residents. "There's a different lifestyle here," says Bart. "We're not simply selling lots, we are creating a neighborhood."



Exterior building products were chosen for style and durability. Composite shingle siding offers the look of wood without the maintenance and adds to the home's historic character. A standing-seam metal roof complements the traditional look. It also resists sea winds and corrosive salt air, says builder Jim Sykes. • Siding: James Hardie • Roof: Metal Roofing Alliance

Chesapeake Bay and Pretty Lake, where a marina serves locals. "Here, you have a terrific house in a place where you can walk or bike from home to the beach and perhaps your boat," Bart says. In addition, there's entertainment, dining, and boutique shopping.

To serve families, a Montessori school welcomes children ages 3 to 6. Parks grace almost every block. Players compete with knee-high kings and queens on the giant chessboard outside the clubhouse. "The Bay Front Club has a pool and deck area where residents can enjoy the sights, sounds, and breezes of the beach without the sand—and with a drink, if they'd like," Bart says.





FLOOR PLAN

Architect Gerrie King West of Folk West + Savage Architects in Virginia Beach, Virginia, wanted the home's design to reflect the area's rich heritage. "I grew up here noticing the difference in architecture between Norfolk and Virginia Beach," Gerrie says. Recalling childhood memories, she combined

details from both architectural precedents in designing the home's exterior. "One of my grandmothers lived in a shingle-style house in downtown Norfolk. The other had a wraparound porch," she says.

Inside, three stories of trim work, fireplaces, and built-in cabinets all draw on the Norfolk vernacular. "And the natural-finish wood doors

inside tie in to the old-house feel," she says. On the first floor, Gerrie planned a large, flowing space so that views were captured from as many rooms as possible—including the kitchen and living and dining rooms. The kitchen design produces the impression

that the room has history. "The wide, level island, the built-in china cabinet, and the difference in finishes give the effect," Gerrie says. A walk-through pantry provides extra storage and elevator access, while the mudroom offers a small shower for rinsing feet, dirty dogs, or sandy children.

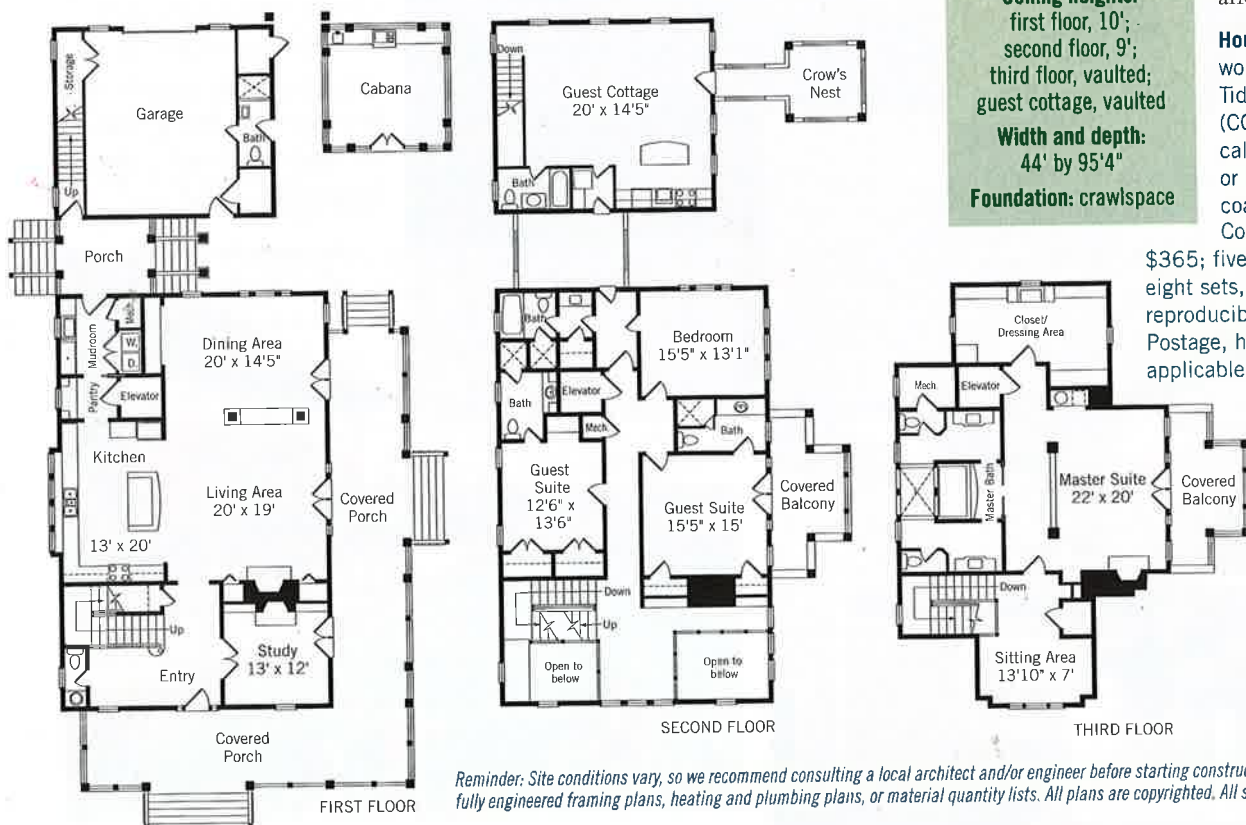
Three second-floor bedrooms each have private baths. One room accesses a covered balcony. The master suite, self-contained on the third floor, also has a balcony, as well as a sitting area, bath, fireplace, coffee bar, and generous closet. Above the garage, the guest cottage comes equipped with its own kitchen, bath, and walk-

way to the nearby cabana's crow's nest. The screened cabana houses an outdoor kitchen and dining space.

House Plan: To order working drawings of Tidewater Landing (COL-0511-1240), call 866/772-1023 or visit our Web site, coastalliving.com. Costs: Planning set,

\$365; five sets, \$1,075; eight sets, \$1,160; reproducible sets, \$1,330. Postage, handling, and applicable taxes will be added.

5 bedrooms, 6½ baths
Heated area:
5,092 square feet
Porches and decks:
1,862 square feet
Ceiling heights:
first floor, 10';
second floor, 9';
third floor, vaulted;
guest cottage, vaulted
Width and depth:
44' by 95'4"
Foundation: crawlspace



Reminder: Site conditions vary, so we recommend consulting a local architect and/or engineer before starting construction. Plans do not include fully engineered framing plans, heating and plumbing plans, or material quantity lists. All plans are copyrighted. All square footage is approximate.



ENTRY

"Because this part of the world has so much history," says interior designer Susan Lovelace of Lovelace Interiors, "we created spaces that are transitional but inspired by local tradition. When you enter the front door, you immediately know this house will show you a new twist on Tidewater Virginia style."

"The foyer introduces the relaxed, coastal feel of the home," adds Susan's associate,



Debbie Faulkner, of the towering entry with its wide staircase. Here, antique heart-pine floors showcase a honey-hue shine. Stair treads and banisters finished in a rich, long-lasting stain repeat the look of the floors'

reclaimed wood. Accents set the coastal tone. Distinctive artwork showcases native flora, and a bowing shorebird rests on the landing. A small table with turned legs, a shapely lamp, and a striped wool rug offer color and style.

Off this vestibule, a study exudes masculinity with stained paneling and built-in bookcases. Twin leather armchairs and an ottoman gather in front of a moss-color marble fireplace. A leather-topped oval desk and statuesque lamp create a handsome space for paying



In the entry, a glass-panel, Craftsman style pine door lends prominence to the powder room. Throughout the house, premium wood doors with textured-glass panels give a frosted look, admitting light but preserving privacy. The mahogany front door (inset, left) team traditional design with a weather-resistant finish. Its brushed-nickel handle set pairs security with beauty. Handcrafted copper lanterns and tea planters accessorize the home's shingle-style architecture. "They will weather to a wonderful, natural patina over time," says Debbie. • Floors: Carlisle • Exterior lighting: Carolina Lanterns • Windows and doors: JELD-WEN • Door hardware: Kwikset • Stain: Minwax • Finance: Wachovi

bills and checking stock prices online. Above, the room opens to a spacious second-floor landing accessed by the stairwell and complete with seating and storage.



The living room looks out to the Chesapeake Bay through French doors that lead to a wraparound porch. Outside, comfortable synthetic-wicker and teak seating helps extend the living area. Above the fireplace, an artist's rendering of local sand dunes (top) adds one more window to the shore. The designers scattered pine-stained tables throughout the living space. A low tray table provides a stage for fresh flowers. Two drop-leaf tables expand display surfaces and offer a place to rest sunset-hour cocktails. Between club chairs, a round table holds hurricane lamps. "We also used Craftsman-style columns to define the living and dining areas," says Gerrie. The vertical lines provided a perfect spot for a built-in buffet. The ship model on top "pays homage to the ones that sail just beyond the wrap-around porch," says designer Allyson Jones. • Furniture: Thomasville

LIVING

In the main living space, pale blue walls soothe the senses and act as a skylike backdrop for off-white furnishings. "The great room draws you in," says Debbie. "It doesn't overwhelm. It's cool, soft, and inviting." Furnishings with curving silhouettes complement the palette. A demure sofa lined with pillows fronts a pair of club chairs. A wing chair covered in outdoor fabric promises to repel life's little messes. Near the fireplace, an oversize ottoman on casters, also upholstered in outdoor fabric, offers mobile seating and doubles as a table-top when entertaining.

"The furniture frames are all very traditional, but we used an eclectic mix of

fabrics," says designer Allyson Jones. "The upholsteries are soft colors," Susan adds. "But rather than ho-hum neutral, the variety of fabric textures gives life and harmony to the room." Loose-weave linen sheers with blue-fringe trim frame windows, and sea-blue tweed-style fabric covers club chairs.

Accessories also add tactile interest. Natural-fiber window shades match a sea grass rug and raffia lamp shades. Pillows covered in mother-of-pearl buttons glisten alongside a silver lamp and a shell-filled glass urn.

Be versatile. Choose furnishings, such as drop-leaf tables and ottomans, that can pull double duty when friends and family visit.



Tabletop accessories sparkle when the sun streams through the dining room's French doors (top). Mercury-glass balls fill large hurricanes. The mother-of-pearl bowl can act as a serving dish or a still life. The table settings mirror the home's locale. "The china is embossed with shell designs and trimmed in a beautiful sea-foam color," says designer Debbie Faulkner. Crisp white linens and hotel-style flatware give the tabletop continental style. Inset: Stainless drawer pulls and appliance finishes bring a modern vibe to the built-in bar. "The bar and the settee really take the space beyond holidays and dinner parties. The room becomes a place to hang out and have a glass of wine," says interior designer Susan Lovelace. • Wine: Kendall-Jackson

DINING

"The dining table is very classic," says Debbie of the area's rectangular centerpiece, which boasts elegant Queen Anne-style legs and two 20-inch leaves. "We put a modern twist on it by replacing some of the chairs with a cream-color, tufted-leather settee." A wool rug anchors the room with darker hues of blue and beige, and a touch of coral. Overhead, a sculptural glass chandelier almost disappears against a bank of windows and bay views. "The glass contrasts all the wood and adds sparkle and interest," says Debbie, "and it doesn't block your view."

More glass backs the bar lining one wall of the dining



room. Mirrors reflect the sea and yield old-Hollywood glamour. Built-in cabinets and drawers hold necessities, while an under-counter wine cellar with adjustable controls keeps as many as 50 bottles of whites and reds at the perfect serving temperatures.

Go light. Luminous accents, such as glass and mercury glass, add a contemporary feel.



The kitchen's arching faucet system (inset) features single-handle control, a soap dispenser, and a vegetable sprayer. Roomy cabinets and drawers offer storage space for a season's worth of dry goods alongside dishes, pots, and pans. Above, right: Just inside the back door, the laundry room encourages beachgoers to drop wet towels into the wash right away. Front-loading appliances allow even the smallest helpers to fetch fresh loads from the dryer. Shelving holds vacuum equipment, bath tissue, and absorbent paper towels near cleaning supplies. A Hepa-filter central vacuum system quickly cleans up any spill. • Intercom and central vacuum systems: Broan-NuTone • Faucet: Delta • Kitchen appliances: Jenn-Air • Cabinets: Plain & Fancy • Paper products: Scott and Viva



KITCHEN

"I wanted the kitchen to look as though it had evolved over time," Gerrie says. She, Susan, Debbie, and Allyson teamed with Falls Church, Virginia, kitchen designer Dee David to craft a new, custom space with an old feel. To accomplish this visually, they chose frameless cabinets with updated Shaker-style doors in two hues—enamel-glazed latté above, and toffee-stained cherry below. Dishes and dry goods fill glass-front cabinets and acrylic-front drawers.

To contrast the antique look, modern stainless steel appliances are strategically placed in what Dee calls



"centers" around the room. In the cooking center, a professional-style, 48-inch gas range with a convection oven, griddle, and six burners stands just across from a warming drawer. Its moisture-control feature keeps food at the

right degree of crispness. A built-in refrigerator's temperature-management system ensures food stays fresh longer. For storing large items, its shelves adjust with the turn of a handle. Under

the island countertop, a built-in 30-inch microwave with stainless interior and drop-down door is conveniently sited for heating leftovers or defrosting meals. When dinner is served, an intercom system installed near the pantry calls everyone to the buffet line. After supper, the dishwasher and sink serve as the clean-up center. The pair makes straightening prep areas and the cooking center a breeze.

Break it up. Mix cabinetry finishes for visual interest and variation.



NAUTICAL BEDROOM

"Each of the three second-floor bedrooms has its own personality," says Allyson. In one, the designers created a nautical-inspired space fit for the young and young at heart. "This room really has a sense of travel and wonder," Debbie says. A paneled, black, queen-size bed grounds the room against mustard-hue walls. The bed is dressed in soft blue and white combed-cotton linens. A cornflower-blue alpaca throw provides warmth on chilly nights.



"We used tall pine bookshelves on either side of the bed rather than traditional night tables," Debbie says. "Above the bed, we hung porthole mirrors." An oak drop-lid desk and a chair upholstered in playful red-and-white fabric creates a space for constructing a memory book of last summer's vacation. "Mixing the black and pine wood tones is a great way to achieve interest and texture," Susan says. "Having just a few pine pieces makes the finish stand out even more beautifully."



Custom 2½-inch hardwood blinds with a distressed finish and contrasting twill tape easily lower and tilt to the desired degree. "They don't block the view even when they're down, and the wood brings balance to the room," says Debbie. Above: Composite beaded-board wainscoting lends a cottage feel to baths and hallways. Here, designers created a unique towel rack. "We found the old water meters at an antiques store, mounted them on a piece of wood, and *tada!*—a place to hang your wet bathing suit," Debbie says.

• Window fashions: Kirsch



Putting it away just feels wrong.

Choose from over forty eye-catching combinations or find a store near you at www.jennair.com.

To order by phone, call 866-479-5656.



GUEST SUITES

The second-floor bedroom suites offer different designs but equally comfortable accommodations for visiting friends and family. In one, a bold color scheme catches the eye. "This room doesn't have as commanding a view as the waterfront bedrooms," says Susan. "So this is the space where you want contrast and pattern."

A green-and-blue coastal landscape brings seaside color into the space but echoes the wall color with hints of coral. Geometric black-and-white fabric covers the queen-size bed. On each side, three-drawer, burnished leather chests trimmed in antique brass



nailheads support contemporary glass bubble lamps with rust-red shades. "The black and white against the coral makes the room a little more lively," Susan says.

Let art be your guide. The designers pulled their black, white, and coral bedroom scheme from the subtle hues in the coastal painting.



Across the hall, muted botanical prints complement a pencil-post, four-poster, king-size bed. At its end, a demure chair with a rolling back and arms pairs with an ottoman and floor lamp to create cozy seating near French doors and a covered porch. An adjoining bath features an oak vanity with bamboo detailing. "This suite has a ladylike, English feel," Debbie says. "The furniture looks antique, and the room comes across as something from a B&B." The porch's vantage point tempts even sleepyheads to wake for sunrise viewings.



In both suites, embroidered, white cotton sateen and 500-thread-count sheets, pillow covers, and duvet covers await guests. "Simple, elegant linens give these rooms an extra element of luxury," says Debbie. Neutral-hue carpet brings beauty, warmth, and durability to bedroom floors with guaranteed stain protection. "We chose the carpet for its wonderful texture—it's so comfortable to walk on," Allyson says. • Vanities: J. Tribble • Flooring: Mohawk • Linens: Yves Delorme



Metal Roofing is a great idea. Here's proof:

The 2005 *Coastal Living* Idea House at East Beach in Norfolk features a beautiful and durable metal roof. After all, metal roofing lasts up to 50 years and stands up to extreme weather conditions. Plus it comes in a range of styles and colors. Which makes it a great idea for your house, too. To learn more, visit MetalRoofing.com.



A proud sponsor of the 2005 *Coastal Living* Idea Home at East Beach in Norfolk.



The efficient heating and cooling units team with an indoor air-quality system to ensure everyone's comfort by removing vapors, contaminants, and household odors. • Heating and cooling: Lennox

GALLERY

On the second-floor landing, built-in bookcases continue from the study below. The shelving acts as storage and a gallery for all things sea-related. "The shelves' style and finish feel nautical," says Allyson, "so we enhanced that with maps, the ship's wheel, and other items that feel like they

were collected over time." A cozy reading nook in the window-wrapped space features twin club chairs in a beachy plaid, a floor lamp with a striped silk shade, and a soft Berber wool rug.

Build in architectural details. Bookcases, beams, mantels, and wainscoting lend character and permanent style.



In the master suite's sitting room (below), the designers hung a large Roman shade made from soft outdoor fabric that will not fade in the harsh eastern sunlight. "The ecru fabric has a wonderful texture. We trimmed it with a muted, aqua braid and chose sage fabric for the tape," Debbie says. "The folds of the Roman shade and the flowing linen drapes give the space softness," adds Allyson. Right: Bedroom windows echo that supple texture with woven-wood shades and linen drapery panels. "The color palette makes the suite harmonious and comfortable," Susan says.



MASTER SUITE

A retreat unto itself, the master suite occupies the entire third floor. A plush settee covered in resilient outdoor fabric invites homeowners to the sitting-room work space. Beneath a bank of windows, a leather-topped, campaign-style desk and chair peer out over the bay.

In the bedroom, a graceful chair and ottoman cozy up to the fireplace and windows with sailboat vistas. A low wall behind the king-size sleigh bed separates the bath without blocking the scenery.

Personal space is built into the master bath, with mirror-image vanities and



Carve out a sanctuary. Even the smallest area—the stairway landing or a nook under the roofline—can provide a spot for quiet contemplation when outfitted with a comfortable chair.



Beyond French doors, outdoor-fabric curtains in a cabana-inspired stripe provide shade and privacy for the third-story covered porch. A pair of clean-line chairs and an ottoman bask in the breeze. Weather-resistant cushion fabric in a traditional taupe-and-white check pairs with papaya-hue accent pillows. "This furniture is as durable as it is beautiful," says Susan. "I love that it looks like something you'd use inside." • Outdoor furniture: Agio • Bath fixtures: Brizo



water closets. The infinity spa tub and glass-walled shower are built for two. "The bath has some very contemporary architectural features," says Debbie. "So we used traditional elements to balance those out." Polished marble tops the twin walnut vanities. Coordinating mirrors offer classic styling in the glass-tiled space. Rich coral bath linens and mother-of-pearl accessories provide bright color and shimmer. Like



pieces of modern art, chandelier fixtures in brushed nickel adorn the tub and sinks.



GUEST COTTAGE

A narrow flight of stairs leads visitors to a private cottage above the garage. Accessible via keyless entry, this studio apartment explodes with color and funky, modern styling—vivid painted wicker and wood, playful patterns, and tonal striped walls. In the living area, a shrimp-color cocktail table unites a small armoire, 1950s-style wicker chairs with black-and-white stripes and polka dots, a tufted-back sofa upholstered in pale blue linen, and a sleek, white leather armchair. “The chair brings a great, retro feel to the cottage,” Allyson says.

For snoozing, a carved queen bed painted soft green



“This is such a cheery space,” Allyson says. Adds Debbie, “We had a blast designing it, and now we can’t wait to stay in it!” On the walls, composite tongue-and-groove paneling forms wide horizontal planks. “We painted really big stripes—several planks wide—on the walls using three shades of aqua, with a fourth color for wood-work and the ceiling,” Debbie says.

• Furniture: Maine Cottage



Add history. Seek architectural salvage for instant nostalgia.



Coated-aluminum tiles on the walls and a vintage-style vanity painted black give the bath modern flair. A round, hot-pink mirror softens the edges of the room and ties the space to the colorful studio apartment. No self-respecting guest cottage would be complete without its own place in the sun. A short breezeway takes visitors to the second-story crow's nest (right), above the cabana. Here, all-weather furniture welcomes loungers and their margaritas. "We used sand-color upholstery on the furniture," Debbie says. The designers also utilized outdoor fabric for curtains that resemble linen, and added grommets for shipshape detailing.



anchors the sleeping corner of the cottage. Nearby, a four-cubby case contains color-coded baskets for overnight necessities, and a bright pink wicker table holds an egg-shape lamp for nighttime reading. The contemporary-cottage juxtaposition extends to the convenient kitchen, with its eclectic mix of wicker accents, stainless appliances, farmhouse-style sink, and soapstone counter-tops. Even small appliances, such as a genie-bottle-shape blender, get into the groove.





"In planning, we thought about the path people would take from the beach to their bedrooms. The outdoor shower and pool bath are important for keeping sand outside," says architect Gerrie West of the outdoor space. Adds Susan, "The different levels make sure that when you're inside the house, your view isn't inhibited." Poolside, high-grade teak chairs with marine-quality solid brass and stainless steel fittings lounge beneath a parasol's shade. "The pool is not large, but it's the perfect size to take a dip," Susan says.

• Teak furniture: Barlow Tyrie • Fabrics: Sunbrella

OUTDOOR LIVING

With the plan's more than 1,800 square feet of open-air spaces, homeowners enjoy bay breezes year-round. On the first-floor porch, two groupings of synthetic-wicker seating covered in patterned cushions extend the interior's living and dining spaces. "We selected durable outdoor fabrics and furnishings so there are no worries about coming in off the beach and plopping down on the porch," Allyson says. "The fabrics are fun, but fairly neutral," she adds, noting that the color scheme blends with the water and natural landscape. In the

porch's corner, a teak swing harkens to past Southern summers.

Beyond, a deck of honed, Tennessee crab orchard stone surrounds a small pool. "It has enough texture to keep people from slipping, but is still comfortable to walk on barefoot," says builder Jim Sykes.

Where the stone gives way to composite decking, a round teak table, folding armchairs, and a parasol offer shady alfresco space for dining near the fire pit. "The firelight adds a lot of ambience to the outdoor rooms and provides warmth



in the cooler months so everyone can still enjoy the terrace," says Allyson.

In the screened cabana, the designers outfitted a kitchen as an outdoor chef's

dream. A professional grill topped with a powerful cooking ventilation system in a sleek, stainless steel finish keeps the cabana smoke-free. Other outdoor appliances—under-counter refrigerator, draft-beer dispenser, sink, and warming drawer—help create the ultimate cooking system. Guests watch the chef at work from

a glass-topped dining table and wicker chairs beneath a whirling ceiling fan. "The outdoor kitchen is fully functional," Allyson says. "You could prepare a five-course meal out here."



Wide Plank Floors

Eastern White Pine

For this generation and those to come, choose the highest quality wide plank floors, finely crafted by the Carlisle family for nearly 40 years.

Call for your free portfolio
800-595-9663

www.wideplankflooring.com

Carlisle
Wide Plank Floors

Finely crafted. Trusted for generations.



"Virginia has a tradition of white picket fences," says landscape architect C. Douglas Aurand, pointing to the low fence that frames the property. Beachside, a short, brick wall and open fencing separate the sand from the small lawn. "The sea oats grow right up to the wall, and the fence is open for the view," he explains. "The corner panels are solid for wind protection and privacy." Inside the fence, the plunge pool offers homeowners a place to cool down on hot summer days. Doug chose a durable, slate-blue finish containing natural shells for the pool's interior. The design team opted for windows and French doors that are clad on the outside so they will last, but have wood finishes inside. "At the coast," says Gerrie, "we recommend buying the best window and door systems you can afford. It is a very important part of waterproofing a house." The windows fold in for easy cleaning. • Beaded board and sheets: AZEK • Pool finish: Pebble Technology • Decking: Trex



BUILDER NOTES

As a custom builder on the Virginia coast for more than 25 years, Jim Sykes knows that a house on the bay needs to be solidly built in order to combat water, wind, and salt air. "We start with a wood frame of No. 1 Southern Yellow pine, then cover it with plywood sheathing," he says, "and we hand-drive nails. We feel like that makes for a much stronger house." After the waterproofing layer is added, Jim says he has a rigid diaphragm that will be extremely resistant to wind.

With the basic structure in place, the design team chose products that will hold up in the corrosive coastal environment. Composite siding promises not to rot, warp, or split like wood.

"I love the shingles," Gerrie says of the fiber-cement product. "They hold paint for a long time." Fences, columns, cornices, and beaded-board porch ceilings made from cellular-PVC material will also resist rot. "This has become the product of choice for exterior applications," says Jim. "You can glue it, nail it, cut it, and it holds paint well."

On upper-level porches, in the cabana, and on the ground, burnished amber composite decking will hold its rich, rain-forest mahogany look without the need for protective sealants through many icy winters and 100-degree summers. "It looks much like natural wood," Jim

says. Because it fights insect infestation and rot from standing water, it's perfect for ground-level decks and walkways.

Landscaping also must stand up to seaside elements. To ensure its survival, Doug took cues from native flora. "We tried to use as many plants that are indigenous to Norfolk as possible," he says. Sheltered from the beach, the backside of the house features a few

less-hardy varieties. "But the salt and wind tolerance increases as you get closer to the bay," Doug says. "We planted long-blooming perennials to come up at different times for a mix of colors." Ornamental grasses such

as pennisetum and miscanthus, leopard plant, and black mondo grass give the garden natural form, while gardenia and ginger lily bring fragrance.

To order a CD-ROM (\$10) with additional photos and resources, or to see a slide show, visit coastalliving.com.

SPECIAL THANKS

Coastal Living would like to thank Laurie Bell, Caron's Beach Cottage, Chatham Sign Shop, Dee David, DCS by Fisher & Paykel, Jim Draper, Franke, Fred Habit, Home at Sea, Hunter Fan, Izabella Ltd., Jamie Young Company, Kramer & Dey, M-Boss, Maytag, Modern Objects, Natuzzi, Pier 1 Imports, Rugs Under Foot, Seafarer Ltd., Vermont Soapstone, Village Court, and Wind & Weather. Your products and talents add a distinctive touch to this project.



East Beach Development Team:

Front row: Donna Arbogast, Aquita Neal, Sherry Gortney, Randi Klein, Lauren Steed. Back row: Bart Frye, Rock Bell, Wendy Prince, Katie Wood, Christine Price, Henry Cooper, Joe Barnes, Roger Wood

JOIN THE COLOR REVOLUTION

Bring out wood's beautiful grain with Minwax® Water-Based Wood Stain. Choose from colors like China Red (below), Deep Ocean, Summer Rose, Mustard or Cherry Blossom. And for a beautiful, durable, crystal-clear topcoat, use Minwax® Polycrylic® Protective Finish. The results are revolutionary.



Express yourself with any of 74 dramatic colors.



Makes And Keeps Wood Beautiful®
minwax.com

©2005 Minwax Company. All rights reserved.



Folck West + Savat
Architects:
Gerrie King West



J.M. Sykes, Inc. Builder Team:

Pat O'Rork, B.R. Scarborough, Laura Norris, Jim Sykes

Siska Aurand
Landscape
Architects, Inc.:
C. Douglas Aurand



Lovelace Interior
Design Team
(clockwise from
bottom):
Susan Lovelace,
Allyson Jones,
Debbie Faulk

RESOURCES

ADDITIONAL SPONSORS: Wicker outdoor furniture, Agio; agio-usa.com. Deck board and other cellular PVC, AZEK Trimboards; 877/275-2935 or azek.com. Teak furniture, Barlow Tyrie; 800/451-7467 or teak.com. Faucets, Brizo; brizofaucet.com. Ventilation, intercom, and central vacuum, Broan-NuTone; 800/558-1711 or broan.com and 888/336-1818 or nutone.com. Hardwood flooring, Carlisle Wide Plank Floors; 800/595-9663 or wideplankflooring.com. Outdoor lighting, Carolina Lanterns; 877/881-4173 or carolinialanterns.com. Faucets, Delta Faucet Company; 800/345-3358 or deltafaucet.com. Bathroom vanities, J. Tribble Antiques; 888/652-6116 or jtribbleantiques.com. Siding, James Hardie; 888/542-7343 or jameshardie.com. Windows and doors, JELD-WEN Windows & Doors; 800/535-3936 or jeld-wen.com. Appliances, Jenn-Air; 800/536-6247 or jennair.com. Countertop appliances, Jenn-Air Attrezzi; 866/479-5656 or jennairattrezzi.com. Kitchens, Kendall-Jackson; kj.com. Window fashions, Kirsch; kirsch.com. Hardware, Kwikset; 800/327-5625 or www.kwikset.com. Heating and cooling, Lennox; 800/953-6699 or lennox.com. Guest cottage furniture, Maine Cottage; 888/859-5522 or mainecottage.com. Roofing, Metal Roofing Alliance; metalroofing.com. Floor stain, Minwax; 800/523-9299 or minwax.com. Flooring and tile, Mohawk; 800/266-1515 or mohawklflooring.com. Pool finish, Pebble Technology Inc.; 800/937-5058 or pebbletec.com. Cabinetry, Plain & Fancy Custom Cabinetry; 800/447-9006 or plainfancycabinetry.com. Paper products, Scotts; scottsbrand.com; and Viva, vivatowels.com. Outdoor fabrics, Sunbrella; sunbrella.com. Furniture, Thomasville; 800/225-0265 or thomasville.com. Decking, Trex; 800/289-8739 or trex.com. Financing, Wachovia; 800/922-4684 or wachovia.com. Linens, Yves Delorme; 800/322-3911 or yvesdelorme.com.

SPECIAL THANKS: Outdoor pillow design, Laurie Bell; 336/370-1033 or lauriebell.com. Kitchen design, Dee David, Dee David & Co.; 703/560-6601 or deedavidandco.com. Outdoor kitchen, DCS Dishwasher & Paykel; 888/281-5698 or dcsappliances.com. Original artwork, Jim Draper; draperstudios.net. Sinks, Franke; 800/626-1011 or franke.com. Ceiling fans, Hunter Fan; 888/830-1326 or hunterfan.com. Bath products, Izabella Ltd.; 770/754-4440. Metal hardware, M-Boss; mbossinc.com. Washer and dryer, Maytag; 800/688-0000 or maytag.com. Chair, Natuzzi; www.natuzzi.com. Rugs, Rugs & More; 800/262-6612 or rugsonderfoot.com. Countertop, Vermont Soapstone; vermontsoapstone.com. Framed prints, Village Court; 910/327-0327 or villagecourt.net. Lamps and accessories, Jamie Young Company; jamieyoung.com. Accessories from Caron's Beach Cottage; 287-1717 or caronsbeachcottage.com. Chatham Sign Shop; 800/446-7467 or chathamsignshop.com. Home at Sea; 888/856-3833 or homeatsea.com; Kramer & Dey; 866/239-2121 or krameranddey.com; Habitat, lighthouses2art.com; Modern Objects; 203/378-5785 or modernobjectshardware.com; Pier 1 Imports; 800/245-4595 or pier1.com; Seafarer Ltd.; 609/652-9491 or seafarerltd.com; Wind & Weather; 800/922-9463 or windandweather.com.

OTHER PRODUCTS: Fixed lighting, HiLite from Accent Lighting; 866/372-0303 or accentlight.com. Paint, Benjamin Moore; benjaminmoore.com. Ceramic tile, Cerim Ceramiche; www.cerim.it. Fixed lighting, Cindy Ciskowski; 732-3200 or cindyciskowski.com. Drapery trim, Conso; 800/845-1010 or conso.com. Architectural remnants, Country Boy's Antiques; 800/627-3630. Fixed lighting, Crowder Designs; 866/346-4257 or crowderdesigns.com. Drapes constructed by Designer Workshop; 757/1651-1651. Outdoor drapery hardware, Elegant Draperies; 757/853-0000. Fabric, Fabricut; 800/999-8200 or fabricut.com. Fabric, Henry's Fabrics; 888/732-1996 or henrycalvin.com. Fixed lighting, Hinkley Lighting; 800/446-5539 or hinkleylighting.com. Fixed lighting, Hudson Valley Lighting Inc.; 845/561-0300 or hudsonvalleylighting.com. Drapery and trims, Kravat; available to the trade only. Tile, Marble Systems Inc.; marblesystems.com. Fixed lighting, Oggetti Luce, at the Excentricities; 888/731-2953 or mkates.com. Fixed lighting, Progress Lighting; progresslighting.com. Drawer pulls, Restoration Hardware; 800/762-1005 or restorationhardware.com. Fabric, Robert Allen; 800/333-3777 or robertallendesign.com. Polished countertops, Walker Zanger; 818/252-4005 or walkerzanger.com.

THROUGHOUT: Central vacuum system, intercom system, and ventilating fans from Broan-NuTone. Premium Shaker Series interior doors, Pocket Panel interior doors with Fritz glass, all in Western Pine, Custom Collection windows, and Marginal Lite French doors by JELD-WEN. Laurel UltraMax Signature interior door hardware by Kwikset. Main house Antique Heart Pine hardwood floors by Carlisle. Main house stain in Early American with water-based polyurethane finish by Minwax. Heating, cooling, and air purification system by Lennox.

EXTERIOR: Paint in Crownsville Gray (HC-106) by Benjamin Moore. Siding, Shingle siding and Harditrim in Smooth by James Hardie. Weathered Galvalume roof by Englert, member of the Metal Roofing Association. Brasilia decking in Burnished Amber by Trex. Porch cabana ceilings, columns, newel posts, and pickets by AZEK. Mahogany front entry system in Mahogany by JELD-WEN. Hawthorne UltraMax Signature handset and deadbolt by Kwikset. Charleston Collection Single House and Charleston lanterns by Carolina Lanterns.

CUSTOM SINK BASES



J. TRIBBLE

Antiques

www.jtribbleantiques.com

Toll Free 888.652.6116

For you, indulgence has never been just on the surface...



Until now. For more information on Pebble Tec brand superior quality pool finishes, please visit www.pebbletec.com

Pebble Tec
SUPERIOR QUALITY POOL FINISHES

Visit Us Online: www.carolinalanterns.com
Or Call Toll Free: 1.877.881.4173

The Original Charleston Lantern

As Seen In:
Home Magazine House of the Year
And
2005 Coastal Living Magazine
Idea House, East Beach, Virginia

We Ship Anywhere



Gas & Electric Lights For Architects,
Interior Designers and Homebuilders

carolinaLanterns
GAS & ELECTRIC LIGHTS

Mt. Pleasant, South Carolina
917 Houston Northcutt Blvd.
843.881.4170

Daniel Island, South Carolina:
300 Seven Farms Drive
843.388.9193

2005 IDEA HOUSE SPECIAL SECTION

Outdoor Elements fans in Weathered Brick by Hunter Fan. Waveney seat and Caisse Versailles planters by Barlow Tyrie.

ENTRY page 74: Walls in Hazy Skies (OC-48), ceiling in Seapearl (OC-19), and trim in Acadia White (OC-38) by Benjamin Moore. Berkeley sofa table by Thomasville. Venetian table lamp with oval hourglass shade in Blaze Tafetta by Jamie Young. Gentry light fixture in Pewter by Hinkley. Astra Halo pendant in White Canvas by Cindy Ciskowski. Saddle Blanket rug in Dakota by Rugs Under Foot. Panama Patterns woven wood shades in Natural by Kirsch. "Cypress Swamp 1," "Cypress Swamp 2," and "Great Dismal Swamp" paintings by Jim Draper. Palm leaf stork from Pier 1. Architectural remnants from Country Boy Antiques.

STUDY page 74: Walls in Hazy Skies (OC-48) by Benjamin Moore. "Dune Path" painting by Jim Draper. Bark Pulls in Antique Pewter by Modern Objects. Fireplace surround, 12 x 12 tile in Verde Luna by Marble Systems. Vienna chairs and ottoman in 0664-05, kidney pillows in 0942-06, Valencia box on stand, Bloomsbury chair in 1809-04, Roman shades in 2382-90, and Four Corners Bond Street writing desk by Thomasville. Burma lamp in Lacquer and drum shade in Raffia with trim in Chocolate by Jamie Young. Metro rug in Mist Green by Rugs Under Foot. Dungaree braid trim and raffia loop fringe by Kravat. Ocean pillar candle holders from Pier 1.

LIVING ROOM page 76: Walls in Woodlawn Blue (HC-147), ceiling in Seapearl (OC-19), and trim in Acadia White (OC-38) by Benjamin Moore. Irving Park Celine sofa in 5424-02 with cording in 0460-01, Carthage chair and ottoman, Central Park chairs in 1813-55, Four Corners Bond Street Pembroke table and chairside table and Notting Hill tray cocktail table, and Valencia round lamp table by Thomasville. Carthage chair fabric in Block Quilt/Vellum and ottoman in Courtyard/Wren by Sunbrella. Fireplace surround, 12 x 12 marble tiles in Seagrass by Walker Zanger. Large Genie table lamp with open cone shade in Vienna Flower Silk, Mother of Pearl lamp with Butter Silk shade, and Westchester floor lamps with large cone shades in Raffia by Jamie Young. Carnevale Aqua Murrina sconces by Oggetti. Sea grass rug by Rugs Under Foot. Panama Patterns woven wood shades in Natural, fluted drapery hardware, and Stacked Cake finials in Aged Pewter by Kirsch. Vera Casement drapery fabric in Natural by Henry Calvin. Brush trim in Sea Mist by Kravat. "Virginia Dune" painting by Jim Draper. Prints by Village Court. Friendship Ship Model from Home at Sea. Throw pillows and knit throw from Pier 1.

DINING ROOM page 78: Walls in Woodlawn Blue (HC-147), ceiling in Seapearl (OC-19), and trim in Acadia White (OC-38) by Benjamin Moore. Irving Park rectangular table, King Street urn back chairs in 4385-97, and Ernest Hemingway Adriana love seat in 0760-02 by Thomasville. Medley cherry cabinets in Toffee by Plain & Fancy. Faceted Knobs in Polished Pewter by Modern Objects. Polished marble countertop in Crema Marfil by Walker Zanger. Michael Graves single handle bar/prep faucet in Brilliance Stainless by Delta. Elements single bowl sink in Stainless by Franke. Wine cellar and ice machine in Stainless Steel by Jenn-Air. Vanderbilt Estate rug by Rugs Under Foot. 12 Arm Clear Chandelier by Crowder Designs. Mother of Pearl large bowl and Mini Longshan table lamp with oval hourglass shade in Coconut Grove Linen by Jamie Young. Wine by Kendall-Jackson. Panama Patterns woven wood shades in Natural, fluted drapery hardware, and Stacked Cake finials in Aged Pewter by Kirsch. Vera Casement drapery fabric in Natural by Henry Calvin. Brush trim in Sea Mist by Kravat. Accessories from Pier 1. Horn Turtle napkin rings from Home at Sea. Nantucket dinnerware, Nautical wineglasses, and other tabletop items from Caron's Beach Cottage.

KITCHEN page 80: Walls in Hazy Skies (OC-48), ceiling in Seapearl (OC-19), and trim in Acadia White (OC-38) by Benjamin Moore. Kitchen design by Dee David. Pro-Style refrigerator, gas range with convection, dishwasher, under-cabinet hood, built-in microwave, and warming drawer in Stainless by Jenn-Air. Medley maple cabinets in Latte (upper) and Medley cherry cabinets in Toffee (lower) by Plain & Fancy. Hammered Knobs by Modern Objects. Cup drawer pulls from Restoration Hardware. Polished marble countertops in Crema Marfil by Walker Zanger. Slate Collection Quarry Stone backsplash in Dark Mosaic Mix by Mohawk. Hunter Prestige Ashland fan in Antique Black and Cherry by Hunter Fan. Michael Graves single-handle kitchen faucet with sprayer and soap dispenser in Brilliance Stainless by Delta. Vision sink in Stainless by Franke. Firenze Glenn cylindrical pendants by Oggetti. Mohican Tribal Dhurri rug by Rugs Under Foot. Tea towels and bath towels by Yves Delorme. Neptune front-load washer and dryer by Maytag. Panama Patterns woven wood shades in Natural by Kirsch. Dishware and accessories from Pier 1. Paper products by Scott and Vjva.

NAUTICAL BEDROOM page 82: Walls in Roxbury Caramel (HC-42), bath wainscot in Mt. Rainier Gray (2129-60), ceiling in Seapearl (OC-19), and trim in Acadia White (OC-38) by Benjamin Moore.

Tropical Hideaway SmartStrand carpet in Taffy by Mohawk. Urban Retreat mantle bed, drop-lid desk, Havana chair in 8726-91, and Four Corners Notting Hill étagères by Thomasville. Capri Euro shams and blanket cover in White, Elysée linens and standard shams in Celeste, Bleu et bed throw in Cornflower, Bleu et embroidered pillows in Blue, and Rosemary towels in Blue Strip by Yves Delorme. Select Hardwood blinds in Heirloom Pine by Kirsch. Aluminum porthole mirrors, canvas bag, photo album, Naval Code and Compass Rose frames, and sailboat prints from Kramer & Dey. Brass Tide clock from Home at Sea. Lighthouse photography by Fred Habit. Small task lamp and Venetian Petite lamps with clip-on bell shades in Egg Nog Silk by Jamie Young. Throw pillows, rattan cube, iron globe, and accessories from Pier 1. Bath beaded-board wainscot by AZEK.

CORAL GUEST SUITE page 84: Walls in Wild Flower (2090-40), ceiling in Seapearl (OC-19), and trim in Acadia White (OC-38) by Benjamin Moore. Cinnamon Hill Davidson upholstered bed, bachelor's chest, Four Corners Seville leather chairside chests and Lisette chair in 5972-99 by Thomasville. "Wild Horse in the Marsh" painting by Jim Draper. Hunter Prestige The Royal Oak fan in New Bronze by Hunter Fan. Palace Collection Etoile shams and linens in Ecru by Yves Delorme. Large Bubble table lamps with open cone shades in Red Rust Silk and Large Task lamp Jamie Young. Muslinet Soft vertical shades in Snow by Kirsch. Mirror, knit tweed throw, and accessories from Pier 1.

GREEN GUEST SUITE page 85: Walls in Tuttle (PT-340) by Benjamin Moore. Tropical Hideaway SmartStrand carpet in Taffy by Mohawk. Irving Park pencil post bed, Charlotte chair, and Eaton Square ottoman in 8000-94 by Thomasville. Framed botanical prints by Village Court. Ghee floor lamp with drum shade in Beach Stripe Linen by Jamie Young. Throw pillow from Pier 1. Laurier duvet cover in white, mohair throw in Camel, and Olympe towels in Natural by Yves Delorme. Castlemere bath towel in Star White by Mohawk. Bamboo sink base mirror in Burr Oak by J. Tribble. Polished marble countertop in Crema Marfil by Walker Zanger. Williamsburg Classic faucet in Satin Nickel by Brizo. P7107-09 sconces in Brushed Nickel by Progress Lighting. Bay Beach outdoor furniture by Agio. Dupione/Maze outdoor furniture fabric and Mariposa/Opal outdoor pillow fabric by Sunbrella. Outdoor pillows by Laurie Bell.

GALLERY page 86: Walls in Hazy Skies (OC-48), ceiling in Seapearl (OC-19), and trim in Acadia White (OC-38) by Benjamin Moore. Prints by Village Court. Hammered Knobs in Polished Pewter by Modern Objects. Ship's wheel from Seafarer Steamship bookshelf and bronze cabin porthole mirror from Home at Sea. Other accessories on shelves from Home at Sea. Pier 1, and Village Court. Lucille chairs in 3378-94 with cording in 1919-55 and Bogart Chesterfield leather accent table by Thomasville. Westchester floor lamp with drum shade in Thru Mint Stripe Silk by Jamie Young. Gentry light fixture in Pewter by Hinkley. Astra Halo pendant in White Canvas by Cindy Ciskowski. Loop Berber wool rug by Rugs Under Foot. Select Hardwood blinds in Heirloom Pine by Kirsch.

MASTER SITTING ROOM page 88: Walls in Hazy Skies (OC-48), ceiling in Seapearl (OC-19), and trim in Acadia White (OC-38) by Benjamin Moore. Ernest Hemingway Correspondent's desk and chair, Lisette settee, Royal Pavilion chairside table, Princess Street ottoman in 5648-92 with cording in 1809-04, and Urban Retreat étagère by Thomasville. Litchfield/Vellum settee fabric by Sunbrella. Small Genie table lamp with small hourglass shade in Chocolate with Herb Stripe Linen and Lucille floor lamp with large open cone shade in Chocolate with Celeste Stripe Silk by Jamie Young. Soumac rug by Rugs Under Foot. Roman shade in Jazz/Parchment by Sunbrella. Luba drapery fabric in Aqua by Fabricut. Linen Basket Weave shade tape in Sage and Rustic Chic Cord drapery trim in Spa by Kravat. Print from Village Court. Accessories from Pier 1.

MASTER SUITE page 88-90: Walls in Silver Marlin (2139-50), trim in Acadia White (OC-38) by Benjamin Moore. Martinique sleigh bed, Crosby chair and ottoman in 7500-56, Four Corners Spenser cellerettes and Spenser Square chairside table by Thomasville. Marble 12 x 12 tile fireplace surround in Sahara Gold by Marble Systems. Palace Collection Indra linens and cover in Ecru, Triomphe blanket cover and Euro shams in Ecru Marquise embroidered pillow in Ecru, Clématite throw, and Affresco towels in Paprika Sienne by Yves Delorme. Moroccan



floor lamp with Porter linen open cone shade and Ghee Table Lamps with medium pleated drum shades by Jamie Young. Seashell prints by Village Court. Celestial Screenplay draperies by Robert Allen. Drapery trim by Conso. Savannah Grasses woven wood shades in Rainfree by Kirsch. Pottery, candlesticks, hurricanes, and candles from Pier 1. Polished marble countertops in Crema Marfil and Fusion 8 x 8 glass wall tile in Alabaster by Walker Zanger. Vesi Channel widespread faucets, Roman tub filler with hand-held shower, and bath accessories in Brushed Nickel by Brizo. Fincher sink base and mirror in Walnut by J. Tribble. Bath products by Izabella. Lorenzo outdoor lounge chairs and ottoman by Agio. Outdoor pillows by Laurie Bell. Outdoor furniture and drapery fabric in Courtyard/Wren and outdoor pillow fabric in Dupione/Papaya by Sunbrella.

GUEST COTTAGE page 92-96: Walls in Antiguan Sky (2040-60), Artic Blue (2050-60), and Spring Mint (2040-70); and ceiling and trim in Crystal Blue (2051-70) by Benjamin Moore. Walls by AZEK. Heirloom Collection Antique Legends hardwood flooring in Sausalito Hickory by Mohawk. Select Hardwood blinds in Heirloom White by Kirsch. Matilda sofa in Bluebell Cottage Linen; Stella armchairs in New Spruce with Blackbird Cottage Linen Stripes upholstery; Stella ottoman with Oatmeal with Blackbird Cottage Linen Dots upholstery; Cottage tea table in Blackbird; Della cocktail table in Shrimp; Fiddlehead end table in Bluebell; Island Hideaway top and base in New Spruce; Emily dressing table in Bluebell; Julianna bed in Sprout; Lemonade table in Shrimp; Wally bar stools in Sprout, New Spruce, and Shrimp; Zelda ottoman in Pepper with Bluebell with New Spruce Cottage Linen Dots upholstery; Unsassy mirrors in Bluebell and Sprout; Square Loveliest mirror in New Spruce; Sassy mirror in Shrimp; Small cubby case in New Spruce and Monday baskets in Sprout, Shrimp, Wave, and Bluebell (page 104); and pillows in Bluebell with New Spruce Cottage Linen Dots, Oatmeal with Blackbird Cottage Linen Dots, Shrimp Clothesline Cotton, and Swing Opus Stripes by Maine Cottage. Leather chair by Natuzzi. Large Egg lamps with large open cone shades in Raffia, Luna floor lamp with large drum shade in Raffia, and Large genie table lamp with drum shade in PJ Stripe Linen by Jamie Young. Mencon linens in White, Rosa quilted bed cover in pistache, and Palmettes towels in Amande by Yves Delorme. Ready for the Beach rug and T-Shirt Rag rug in Apple Green by Rugs Under Foot. Electric radiant downdraft cooktop and under-counter refrigerator in Stainless by Jenn-Air. Countertops by Vermont Soapstone. Fireclay sink in White by Franke. Blender base in Satin Platinum and pitcher in Cobalt Blue by Attrezzi. Provenza 4 x 4 porcelain tile in Ciel by Cerim Ceramiche. BUC-22D-96 island chandelier by HiLite from Accent Lighting. Urban chair bath ceiling and walls, and Mini Eggs-N-Arrows cornice in Clear-coated Aluminum by M-Boss. Miranda vanity in Onyx by J.Tribble. Victorian kitchen and bath faucet in Brilliance Stainless by Delta. Dudley scone in Satin Nickel by Hudson Valley. Bath products by Izabella. Navajo outdoor chairs and ottomans by Agio. Outdoor pillows by Laurie Bell. Outdoor furniture fabric in Spa Weave/Sand with canvas/Spa piping, outdoor pillow fabric in Ocean/Spa, and outdoor drapes in Linex/Vellum by Sunbrella. Outdoor drapery hardware by elegant Draperies. Wave wind chime from Wind & Weather.

OUTDOOR LIVING page 98: Monaco swing, Commander Steamer chairs with cushions in White Sand and cording in Spring, Ascot circular folding table, Carver chairs, and Parasols in Oyster by Barlow. Catalina love seats, chairs, cocktail tables, and Richmond dining table and chairs by Agio. Pillows by Laurie Bell. Love seats in Stripe Me Over Luna, mitered love-seat pillows in Denali/Spa and Linex/Vellum, chairs in Maxim/Spa, dining chairs in Spa Weave/Sand, chair pillows and cubes in Gumdrops/Spa and Stripe Me Over Luna, and pillows in Trax/Spa and Reef/Bone by Sunbrella. Outdoor Stripe rug by Rugs Under Foot. Pebble Sheen pool finish in Slate Blue by Pebble Technology. "Fish Shack" sign by Chatham Sign Shop. Outdoor Professional grill, side burner, beer dispenser, outdoor refrigerator, warming drawer, and access doors by DCS by Fisher & Paykel. Outdoor hood (WPD48148SB) by Broan-NuTone. Blender base in Stainless and pitcher in Cobalt Blue by Attrezzi.

DESIGN TEAM: Interior design, Lovelace Interiors, Destin, Florida; 850/837-5563 or lovelaceinteriors.com. Builder, J.M. Sykes, Inc., Virginia Beach, Virginia; 757/422-8348 or jmsykesinc.com. Architect, Folck West + Savage Architects, Virginia Beach, Virginia; 757/422-6200 or fwsarchitects.com. Landscape architect, Siska Aurand Landscape Architects, Inc., Norfolk, Virginia; 757/627-1407 or siskaaurand.com.

For more information on East Beach in Norfolk, Virginia, call 866/13-0403 or visit eastbeachnorfolk.com. For lodging, call Virginia Beach Resort Hotel, 800/468-2722 or virginiabeachresort.com.

PRODUCED BY
ACQUELYNE FROEBER



YOUR PASSPORT TO OLD WORLD CHARM.



Panama Collection

Welcome to the wonder of all-weather wicker by Agio.* You'll create an aura of warmth, comfort and hospitality that will transport you and your guests to new levels of enjoyment. And with Agio, you're assured the durability and ease of care that makes outdoor entertaining a lasting pleasure, season after season.

agio[®]
The beauty is just the beginning

To find the nearest Agio retailer, visit www.agio-usa.com.

Caron's Beach Cottage

Come visit our world where you can live at the beach every day of the year! Caron's is beach house décor, it is our specialty and our way of life. Dinnerware, linens, fine glassware, decorator art, coastal home accents, lamps, decorator pillows, and so much more!

888-287-1717 • www.caronsbeachcottage.com

**Chatham Sign Shop**

Enhance your home or business with our hand-made gold-leaf signs. We use 23k gold leaf and durable marine enamels to carve personalized name and number signs and quarterboards. All our signs are carved in our downtown Chatham Shop. We are open year-round and ship worldwide. Free color brochure and price list available.

800-547-4467 • www.chathamssignshop.com



COASTAL
LIVING.

Sidenotes

Product highlights from the Coastal Living Idea House

**Home at Sea**

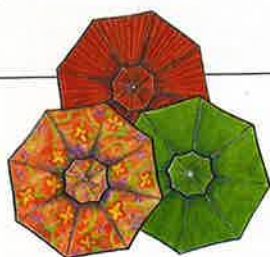
Looking for special holiday gifts for the coastal lovers in your life? Come aboard Home at Sea to find unique coastal furnishings and accessories for your home at sea or any home that loves the sea. Votive Set (\$30 - set of 6), Distressed Frame (\$69), Ocean Vase (\$82), Pewter Hooks (\$12 ea.), Spoon Rest (\$16).

888-856-3833 • www.homeatsea.com

**Kramer & Dey**

Our collection of sepia-toned prints of classic sailing yachts, outlined in black grosgrain ribbon with white contrast stitching and accented with brass nailheads at the corners are set against a hand-painted tortoise-shell ground. Available individually or as a set of four. Finished size 12" x 16".

866-239-2121 • www.krameranddey.com

**Laurie Bell**

Create Colorful Fun in the Sun. Umbrellas, throw pillows, ottomans, cushions for your outdoor room! Fabrics and trims are engineered for the outdoors.

336-370-9503 • www.lauriebell.com

**Village Court**

Clean and crisp, this set of 4 starfish and shell images are the perfect dressing for the oceanside retreat. The single shade of taupe in both the image and mat treatment are sophisticated and classic. Contact Village Court, Inc. at sales@villagecourt.net.

910-693-0327 • www.villagecourt.net

Idea House Quicklist

to contractors & sub-contractors

Audio Wiring:	Definitive Concepts	757/463-
Cabinet Installation:	Dee David & Company	703/560-
Carpet Installation:	W.C. Carpenter	757/460-
Casework:	Hardwood Concepts	757/233-
Concrete:	Tidewater Concrete	757/491-
Countertops and Tile:	International Tile	757/549-
Decking:	Yukon Lumber	757/625-
Electrician:	Nipper Electric	757/491-
Elevator:	Mobility Products	757/399-
Exterior Trim Supplier:	Ervin Architectural	
	Products	757/427-
Garage Door:	Miller Door	757/436-
Hardwood Floor		
Installation:	Brown's Fine	
	Hardwood Floors	757/426-
Heating & Air:	Simmons Heating & Air	757/424-
Landscape Stone:	Superior Marble	757/393-
Landscaping:	Winn Nursery	757/494-
Lumber Supplier:	Norfolk Sash & Door	757/855-
Mason:	Snow Jr. & King	757/627-
Paint Labor:	Bay Painting	757/422-
Plaster:	Tidewater Plastering	757/417-
Plumbing:	Van Nostrand Plumbing	757/426-
Pool:	Gracia & Vigil	757/493-
Receivership:	Monroe Transfer & Storage	757/466-
Roof Installation:	Stevens Roofing	757/488-
Roof Supplier:	Englert	732/826-
Stone Countertops:	Winn Stone Products	757/465-
Structural Steel:	London Bridge Welding	757/423-
Tile Installation:	Larry Ewald	757/636-
Trim Manufacturer:	Tidewater Architectural	
	Millwork	757/422-
Window Treatments:	Designer Workshop	757/499-

Tour our house
with a click
of your mouse

**New Idea House CD-ROM**

Full-color, room-by-room images from our Idea House in VA, including many photos not published in the magazine. Rooms, view Floor Plans, access our Resource Guide, explore Quick Links to Products used in the Idea House.

AVAILABLE FOR ONLY \$10/EA

Check Orders, Call 1-800-366-4712 x86
Credit Card Orders, Visit www.coastalliving.com

*PC and Macintosh versions available. *Please allow 2-3 weeks for shipping.

agio.

www.agio-usa.com

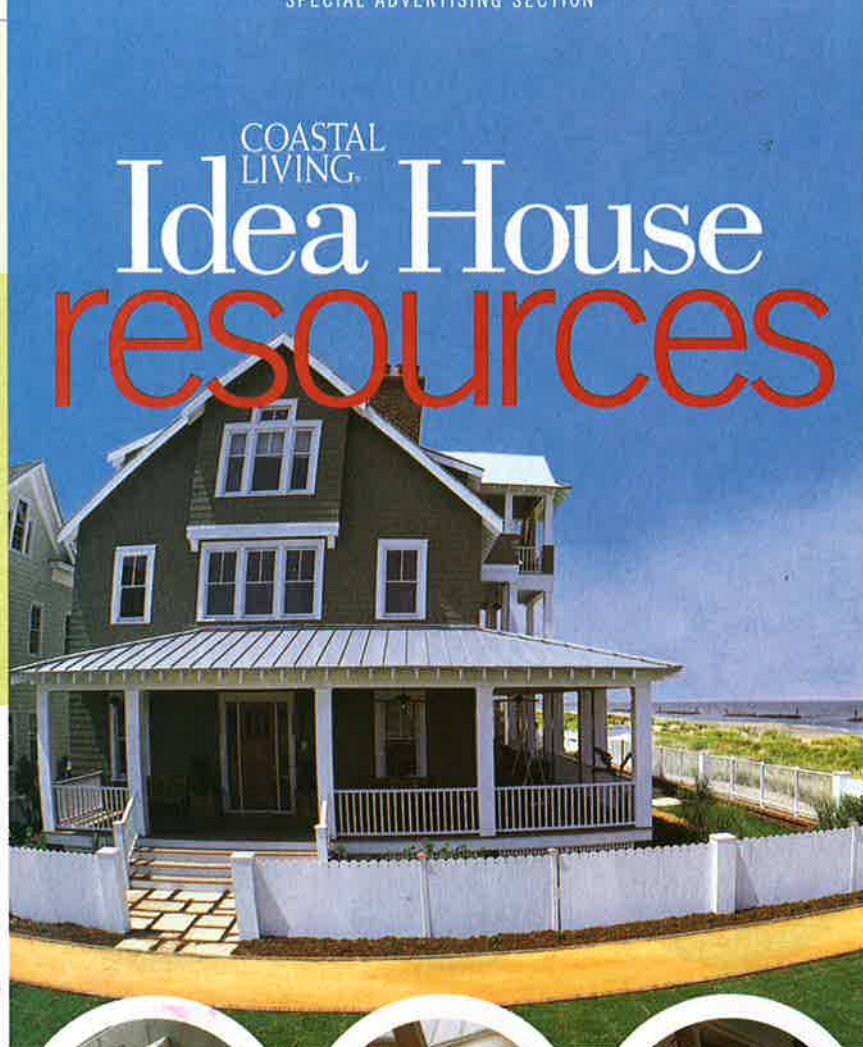
Agio unites elegance and comfort with the latest in outdoor furnishings — from elegant bar groupings and balcony-height collections to cozy chat rooms and new outdoor fireplaces. Crafted from the highest quality materials, your outdoor furniture will take you to the tropics summer after summer. Visit our Web site to learn more about the industry leader in outdoor furnishings.



Barlow Tyrie. Since 1920, Barlow Tyrie's range of exceptional outdoor furnishings has weathered the test of time. Sun lounges, recliners, tables, chairs, benches, planters, and more made of the finest grade teakwood, marine-grade stainless steel, and solid brass hardware. Furniture for poolside, patio, deck, sunroom, or garden. Recipient of 13 international design recognition awards.



www.teak.com
800/451-7467



Brizo is the fashion label that chooses not to work with rayon or silk but with chrome and polished nickel to create distinctively designed premium faucets that make a personal fashion statement in the kitchen and bath. Learn more at our Web site.

BRIZO

www.brizofaucet.com



Carlisle Wide Plank Floors is a family-owned company that has been handcrafting traditional wide plank floors for almost 40 years. Each floor is custom-made to order from Old Growth Pines, hardwoods, and antique woods.



www.wideplankflooring.com
800/595-9663



Carolina Lanterns and Accessories. Few items you can purchase for your home say "romance" like a handcrafted copper gas or electric lantern from Carolina Lanterns and Accessories. Custom-built in the style and tradition of antique gas lanterns that once graced the streets and stately homes of 19th Century Charleston, our lanterns have stood the test of time and will never go out of style.



www.carolinalanterns.com
877/881-4173



Delta Faucet Company. The market-leading Delta Faucet Company brand delivers exceptionally well-made, stylish faucets and related accessories that are precisely crafted to be beautiful both inside and outside.



www.deltafaucet.com
800/345-DELTA

AZEK
TRIMBOARDS

www.azek.com
877/ASK-AZEK

AZEK Trimboards is the leading brand of cellular PVC trim with moisture resistance, durability and beauty to suit any home exterior — including fiber cement siding or stucco. With the low-maintenance homeowners demand, AZEK is available in AZEK Millwork, AZEK Beadboard, AZEK Cornerboards, the Frontier Series, and other versatile profiles.



www.jtribbleantiques.com
888/652-6116

J. Tribble Antiques is proud to present two original collections of handcrafted sink bases for the bath, produced to the highest standards in the United States, England, and Italy.



www.jameshardie.com
866/4-HARDIE

James Hardie. Everyone's dream home is different. That's why we offer a wide selection of exterior siding options for any home style. Choose from lap, shingle, panel siding, and trim accessories in a variety of appealing styles and colors. Choosing siding from James Hardie makes sense — it provides low maintenance, but unlike vinyl siding, doesn't sacrifice the beauty of wood.



www.jeld-wen.com
800/877-9482 xJ25

JELD-WEN Windows & Doors. Reliability for real life. JELD-WEN carefully crafts a wide variety of reliable windows, interior doors, and exterior doors. Our products are designed to bring you energy, security, and most of all, peace of mind. To learn more, visit our Web site.



www.jennair.com
800/JENN-AIR

Jenn-Air manufactures a complete line of built-in kitchen appliances. From core offerings like cooktops, refrigerators, and wall ovens, to niche products like warming drawers, wine chillers, and ice makers, Jenn-Air appliances are designed for the passionate home gourmet. Call, or visit our Web site or more information.



www.kj.com
800/769-3649

Kendall-Jackson — handcrafted wines of complexity, grace and elegance grown in vineyards along California's cool coast. Family owned and operated. Visit us online or call for more information on our wines, visiting our wine center, wine club memberships, food and wine pairing, and more.



Kirsch offers beautiful custom blinds and shades and drapery hardware — the total window — that work in sophisticated harmony. Visit our Web site to find an authorized dealer in your area.

Kwikset. There's hardly a door that Kwikset can't make more attractive — or more secure. For over 50 years Kwikset has meant security and peace of mind for millions of families. No wonder more people trust their doors, inside and out, to the beauty and strength of Kwikset. America's #1 selling lockset.

Lennox. Enjoy complete comfort. For most of us, comfort starts with temperature. The problem is, temperature isn't the only factor that contributes to comfort. It involves a balance of temperature, humidity, and airflow. Many Lennox products are designed to work together to create a comfortable home environment. To learn more about these products, visit our Web site.

Maine Cottage produces colorful home furnishings perfect for any coastal home. 40 colors and over 130 custom fabrics offer the customization of our furniture designs in wood, rattan, upholstered, and synthetics for outdoor use. Additional signature home products including rugs and bed textiles enable complete room and whole-home furnishings solutions.

Metal Roofing Alliance. Residential metal roofing is Investment Grade Roofing, which can enhance the value of your home since it will last for 50 years or more. Visit the Metal Roofing Alliance online to see beautiful examples and find a metal roofing supplier or contractor near you.



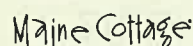
www.kirsch.com



www.kwikset.com
800/327-LOCK



www.lennox.com
800/9-LENNOX



www.mainecottage.com
888/859-5522



www.MetalRoofing.com



www.minwax.com
800/523-9299



www.mohawkflooring.com
800/2MOHAWK

NuTone

www.nutone.com
www.broan.com

888/336-3948 (NuTone)
800/558-1711 (Broan)



www.pebbletec.com
800/937-5058



www.plainfancycabinetry.com
800/447-9006

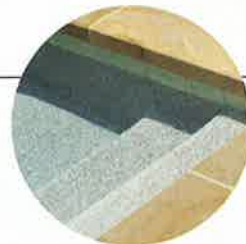
Minwax, the leading manufacturer of quality wood finishing products, has been making and keeping wood beautiful for over 100 years. Minwax has everything you need to prepare, stain, and protect your hardwood floors and other wood surfaces throughout your home. With Water Based Polyurethane for Floors that combines ultra-fast dry time with traditional polyurethane durability, topcoating projects can be completed in just one day.

Mohawk, the world's leading manufacturer of carpet, hard-wood, ceramic, and rugs offers you the latest trends in flooring including: hand-scraped and exotic hardwoods, patterned carpets made from the softest yarns, and ceramic tile to fit any budget or complement any room in your home. With a 125-year history of innovation and excellence, Mohawk is the complete resource for all your flooring needs.

NuTone and Broan provide residential ventilation and lifestyle conveniences that fit in beautifully from the quietest fans to the ultimate in range hoods, quiet and powerful central vacuum systems to the multi-functional communication and security systems. For more information on the full line of Broan-NuTone products please call, or visit our Web sites.

Pebble Technology, Inc. is the manufacturer of Pebble Tec, Pebble Sheen, and Pebble Fina brand natural pebble pool finishes, featuring over 30 color selections. Pebble Tec brand pool superior quality finishes are naturally beautiful and easy to maintain. A tradition of innovation below the surface — yet miles above the ordinary.

Plain & Fancy Custom Cabinetry, a 35-year old family-run company, stands for quality workmanship well within your reach. The company carries no inventory; each kitchen is built to the homeowner's specifications from wood species and door styles, to standard and custom hand-rubbed finishes.



Sunbrella brand performance fabrics offer beautiful styling with a soft touch that rivals the finest interior fabrics. With outstanding stain and fade resistance, plus ease of cleaning, Sunbrella is ideal for active lifestyles indoors and out. Sunbrella is featured by leading furniture manufacturers and available through Calico Corners.

Thomasville can help you define the personality of any room. From rich and elegant to relaxed and colorful, you'll find a range of beautiful, well-crafted furniture and upholstery to fit your style. If your style is relaxed and casual, then the versatile Urban Retreat collection is for you; it fits retro, rustic, urban, or seaside looks. Come in today or visit us online.

Trex composite decking and railing provides you with endless design possibilities. Choose from three distinct styles and seven rich colors. Our newest line of decking and railing products includes Trex Brasilia, reversible Trex Accents and Trex Artisan Series Railing. Get ready to create your space. Call, or visit our Web site for more information and a free copy of Trex DeckScapes magazine.

Wachovia. Nobody's ideas about retirement are exactly like yours. At Wachovia, we understand that you have your own unique perspective, and our approach in helping you achieve your goals will be just as fresh. Wherever you are financially, we're right there with you.

Yves Delorme's luxurious linens for the home are created in the finest European tradition. Fashionably coordinated patterns and colors let you design a custom look to capture every mood and complement every setting, from romantic to contemporary, casual to formal. Yves Delorme — The Art of Linen Since 1845.



www.sunbrella.com

Thomasville

www.thomasville.com
800/225-0265



www.trex.com
800/BUY-TREX



www.wachovia.com



www.yvesdelorme.com
800/322-3911